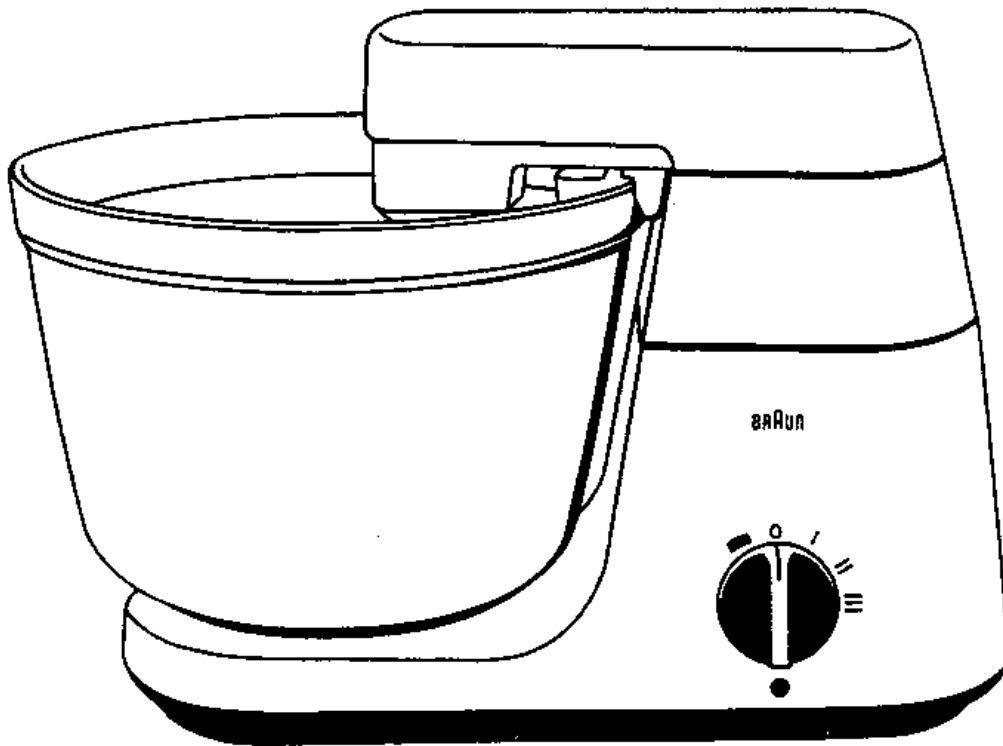


Braun Kitchen machine
with lamp

KM 32 B

4209

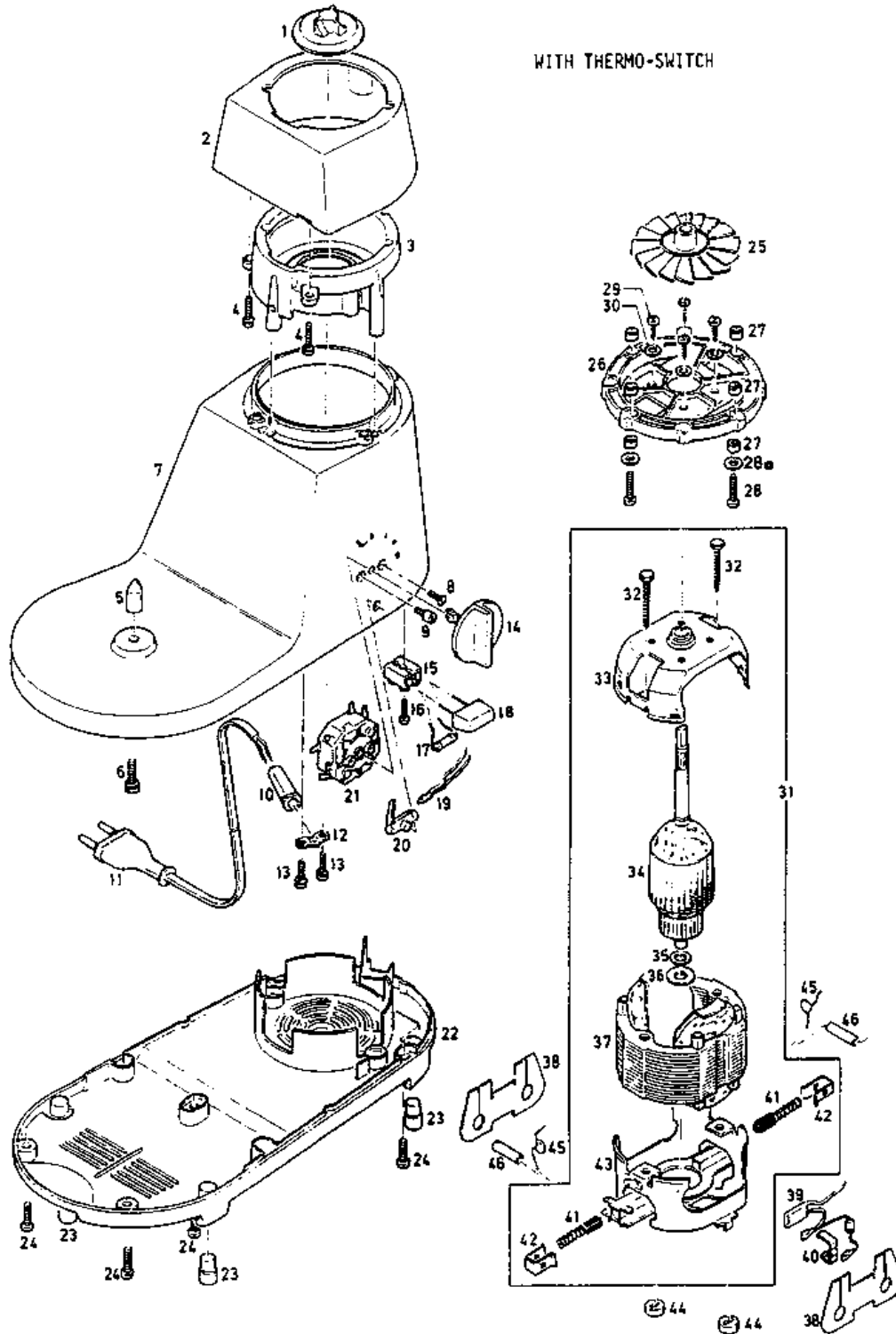


BINC Rev: 7/96

Service Documentation Exploded Drawing

BAG Rev: 7/84

4209



BINC Rev: 7/96

Service Documentation

Service Information

BAG Rev: 12/88

4209

Pos. No.	Part Description	Part Number
1	Male drive coupling	4207100
2	Upper housing	4207923
3	Attachment cone	4207199
4	Screw	0033120
5	Pivon	4207131
6	Screw	0003302
7	Lower housing	4209875
8	Screw	0001500
9	Stop screw	4207500
10	Protective sleeve	4209003
11	Mains lead	4390264
12	Cable clamp	4206149
12a	Cable clamp for pos. 12	4203051
13	Screw	0003170
14	Switch knob	4216193
15	Terminal block	0717253
16	Screw	0002706
17	Resistor	0612717
18	Capacitor	0622099
19	Glow lamp	NLA
20	Glow lamp holder	4230051
21	Switch	4230005
22	Bottom plate cpl.	NLA
23	Foot	4243054
24	Screw	0034115
25	Fan wheel	4230002
26	Suspension of the motor	4207534
27	Rubber buffer	4230006
28a	Washer	0108111
28	Screw	0003135
29	Screw	0028101
30	Washer	0102102
31	Motor	4230550
32	Screw	0030112
33	Upper end shield	4250806
34	Rotor	4230846
35	Washer	4250016
36	Washer	4250017
37	Stator	4230847
38	Air baffle	4250070
39	Thermo-switch	NLA
40	Tension spring for pos. 39	NLA

BINC Rev: 7/96

Service Documentation Spare Parts List

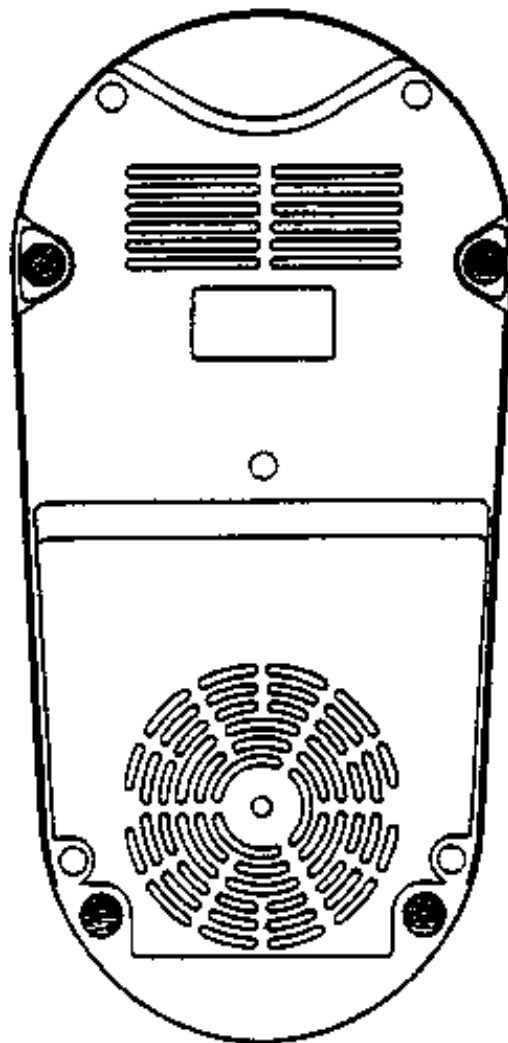
BAG Rev: 12/88

4209

Pos. No.	Part Description	Part Number
41	Carbon brush	4250048
42	Fixing clamp	4250047
43	Lower end shield	4243817
44	Centering rubber	4250045
45	Capacitor	NLA
46	Ferrite-tube	4243078
-	Insulating tube	NLA
-	Plug junction	0710127
-	Double plug junction	NLA
-	Wiring (w/ 1 slip on terminal)	NLA
-	Wiring (w/ 2 slip on terminals)	NLA
-	Type plate	NLA
	Accessories	
	Large mixing bowl	4203014
	Small mixing bowl	4207055
	Dough hook	4207814
	Whisk	4207048
	Whisk for whipped cream	4207620
	Circlip for whisk/hook	4207530
	Spatula	4203118
	Dust cover	4203200

For additional attachment parts see page 16

Bottom of the product



Technical Data

Voltage/Frequency:	110 V/120 V 40-60 Hz
No-load power Position 1:	appr. 125 W \pm 10 %
Position 2:	appr. 130 W \pm 10 %
Position 3/L:	appr. 205 W \pm 10 %
No load speed Position 1:	appr. 10700 min ⁻¹
Position 2:	appr. 12500 min ⁻¹
Position 3/L:	appr. 16000 min ⁻¹
Overheating protection:	Thermo-switch/Fuse
Length of mains lead:	appr. 1.30 m
Operating time:	continuous operation at 400W

1. Removal of motor (31)

Disconnect appliance mains plug from the socket. Loosen the holding screws from the bottom cover plate (22) and remove plate. Then withdraw the male-drive coupling (1) with the aid of an angle-shaped screw-driver.

Draw off switch knob (14) and unscrew switch securing screws (8, 9). Proceed by disconnecting the motor wiring on the terminal block (15). Subsequently loosen the 4 screws (28) with a long screw-driver and take the motor together out of the housing.

2. Reassembly

The reassembly is carried out in the reverse order, however attention should be paid to the rubber buffer (27).

The motor shaft must be supported at the bottom end, when the new male drive coupling (1) is mounted onto the shaft. Pay attention to the wiring diagram.

3. Replacement of the thermo-switch (39)

Remove motor (31) as described in paragraph 1.

Withdraw the air baffle (38) and loosen spring (40). Continue by disconnecting the plug connection on switch (21) and also connection on the terminal block (15) and install new thermo-switch.

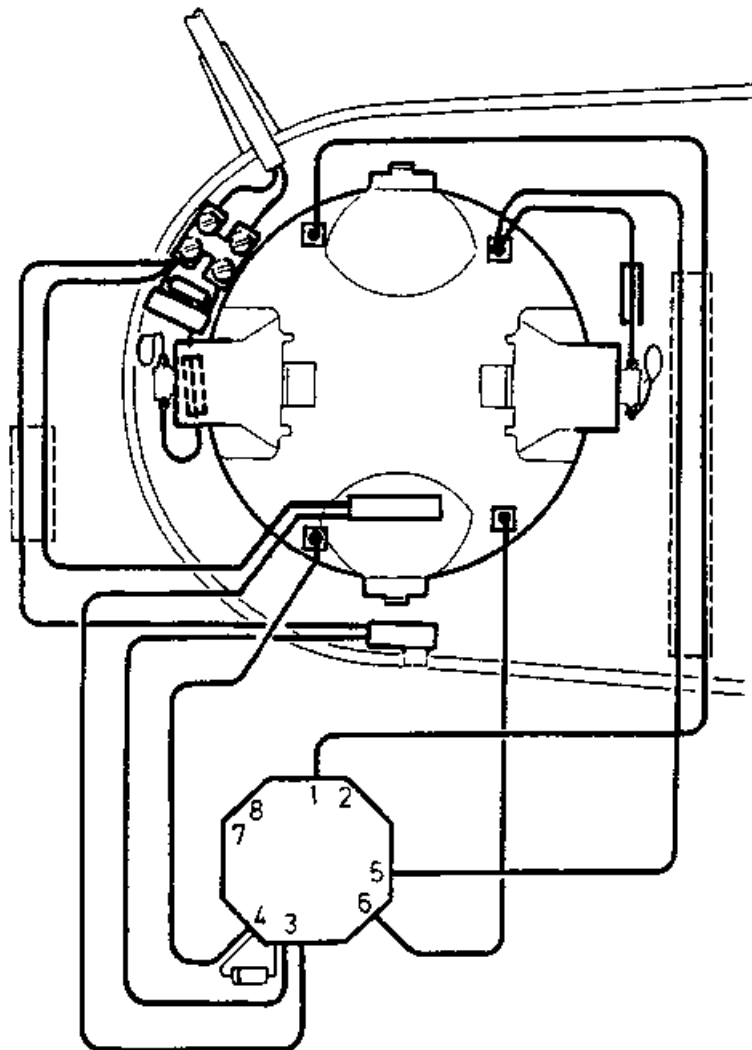
4. Dismantling of motor (31)

With the aid of a screwdriver, push off the fan wheel (25).

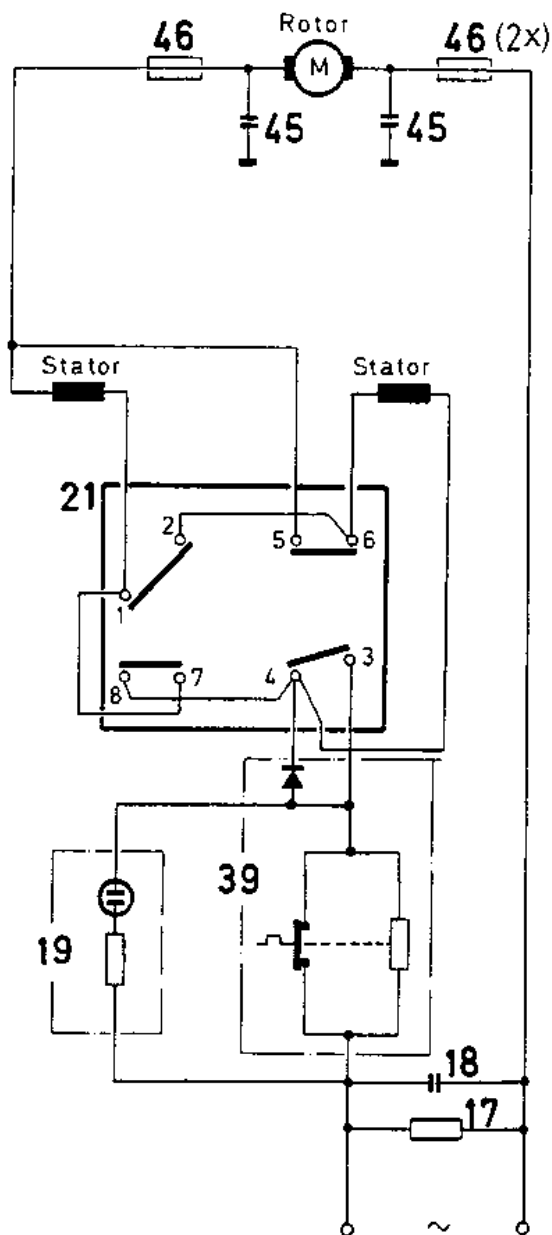
Before starting to dismantle the motor, mark the latter in the longitudinal direction, so that all parts are again placed correctly left to right during the assembly. Use a 8 mm box spanner for removing screws (32). Before the motor is taken apart, first remove the carbon brushes (41). Prior to removing the brushes, loosen the fixing clips (42) at the sides and withdraw carefully.

5. Carry out a functional test

Wiring with thermo-switch



Wiring diagram



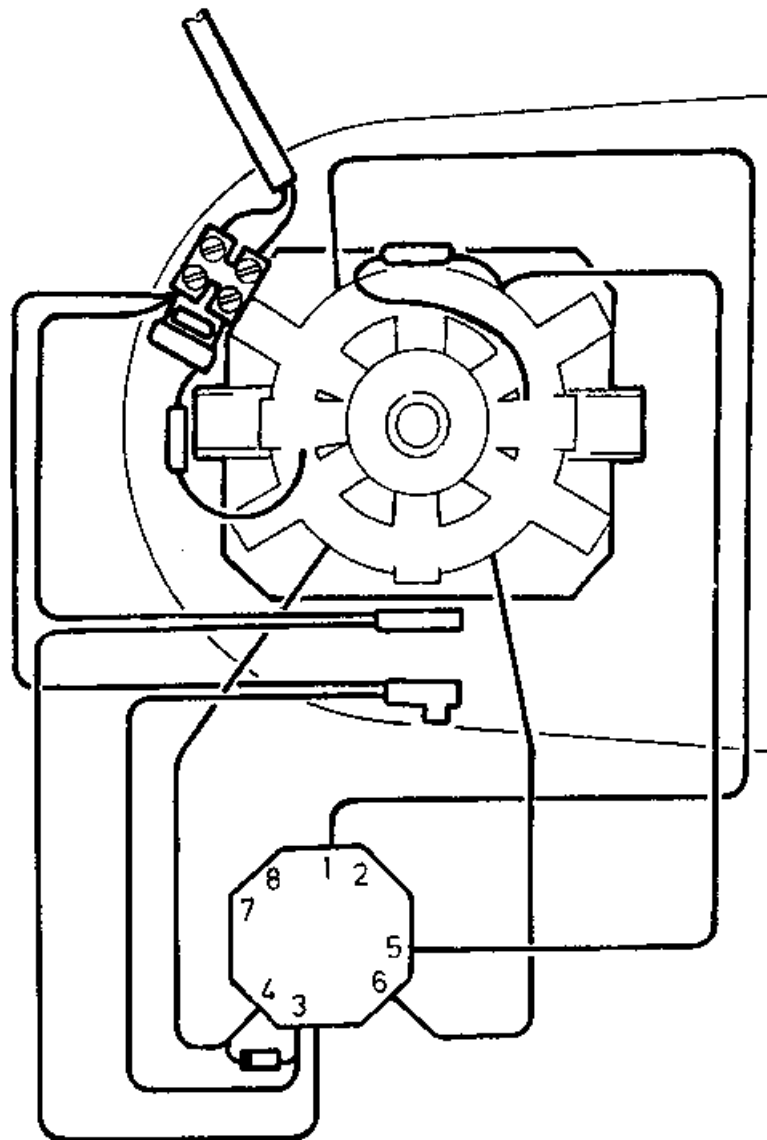
BINC Rev: 7/96

Service Documentation Reference Drawing

BAG Rev: 10/88

4209

Wiring diagram



Products which are considered to be too loud or are returned for this defect.

When judging the operating noise, the mixing arm of KM 32/B or the mixer attachment of the MX 32/B should be engaged. If the operating noise is still considered to be too loud, the following measures should be taken:

1. The motor should not have any off-center condition that means, the outside diameter of the male drive coupling (Pos. 1 must coincide with the inside diameter of the raised attachment cone shoulder (observe an even gap!). If necessary this has to be newly adjusted.
2. All screws of the motor-suspension (Pos. 26 respectively 37) must be tightly fastened. If necessary, this has to be corrected.
3. The motor suspension (Pos. 26 respectively 37), must be checked for areas of breakage or other defects if necessary the parts must be exchanged.
4. Remove the lower centering rubber parts of the motor (Pos. 44 resp. 58 and attach, if necessary, the new and Changed base plate (see instructions below).

Instructions for Braun kitchen machine KM 32/B (4209) and Braun multimix MX 32/B (4142)

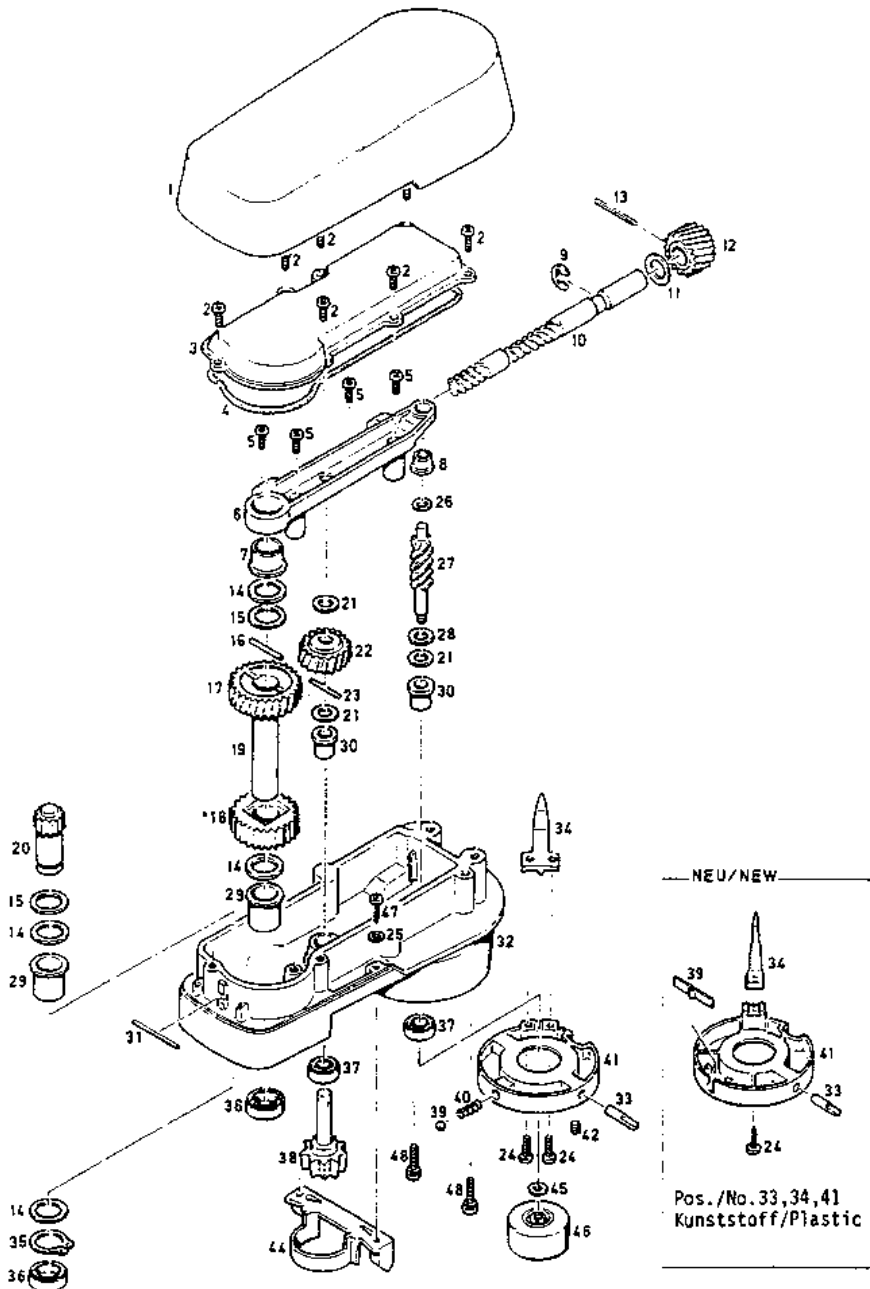
From production week 45,1985 on, the lower four rubber buffers (Pos. 27 resp. 38) of the motor suspension (plastic-type), will be eliminated without a replacement. The motor suspension will be changed accordingly. In previously produced products, the rubber buffers should continue to be used.

At the same time, also the previously used centering rubber parts (Pos. 44 resp. 58) will be eliminated without a replacement. Also in this case, the base plate has been changed accordingly. That means the holes to accept the centering rubber parts in the base plate, have been eliminated. For replacement of these parts, ribs have been molded in the same spot. It is not possible, to attach the new base plate, if the motor still has any centering rubber parts.

The new base plate can be used without problem for previously produced products, if the centering rubber parts have been removed.

Only when these points have been considered, the machine will correspond with the noise allowed by the factory.

Mixing arm for Kitchen Machine



7/84

BINC Rev: 7/96

Service Documentation Spare Parts List

BAG Rev: 2/94

4209

Pos. No.	Part Description	Part Number
1	Mixing arm cover	4207033
2	Screw	0030008
3	Gear cover	4207020
4	Rubber seal	4207044
5	Screw	0030008
6	Bearing bracket	4207822
7	Flanged bearing	4207107
8	Flanged bearing	4207005
9	Circlip	0109301
10	Main worm shaft	4207394
11	Fiber washer	4207019
12	Worm gear	4207478
13	Spring pin	0127201
14	Fiber washer	4207015
15	Washer	4207014
16	Grooved pin	0125102
17/18	Gear wheel-set	4207623
19	Shaft	4207821
20	Pinion	4207820
21	Fiber washer	4207007
22	Worm gear	4207010
23	Pin	4207384
24	Screw	0003135
24	Screw, self tapping *	0038022
25	Washer	0103001
26	Fiber washer	4207008
27	Driving worm	4207006
28	Washer	4207034
29	Flanged bearing	4207004
30	Flanged bearing	4207002
31	Retaining rod	4207112
32	Mixing arm housing	4207819
33	Coupling pin (Metal)	4207030
33	Coupling pin (Plastic) *	4207533
34	Locking lever (Metal)	4207028
34	Locking lever (Plastic)*	4207528
35	Circlip	0112001
36	Radial oil seal ring	4207351
37	Radial oil seal ring	0104003
38	Bowl drive with shaft	4207035
39	Ball	0162002

BINC Rev: 7/96

Service Documentation

Spare Parts List

BAG Rev: 2/94

4209

Pos. No.	Part Description	Part Number
39	Leaf spring *	4207529
40	Spring	4207180
41	Locking ring (metal)	4207027
41	Locking ring (plastic) *	4207527
42	Grub screw	0015101
44	Guide bracket	4207032
45	Distance washer	4213042
46	Coupling	4203055
47	Screw	0031077
48	Screw	0003126

No. 17 and 18 are replaced together.

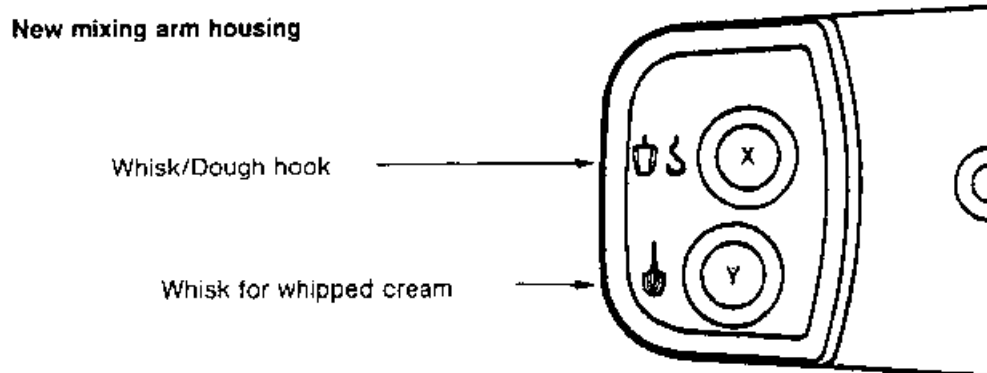
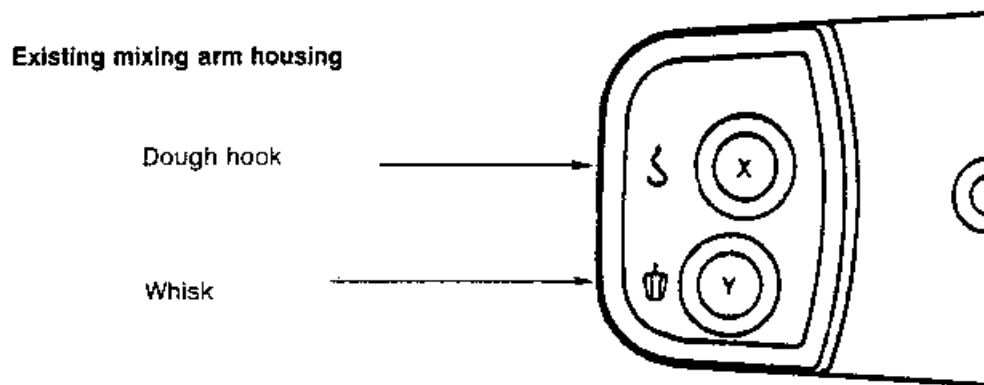
*** Parts that are to be replaced together. When rebuild from metal to plastic version all parts with * should be used together.**

BINC Rev: 7/96

Service Documentation Reference Drawing

BAG Rev: 11/85

4209



Mixing arm No-load speed r.p.m.

	A-Motor	B-Motor
Position I	Y = 461/X = 184	Y = 388/X = 155
Position II	Y = 539/X = 216	Y = 517/X = 207
Position III (IL)	Y = 690/X = 276	Y = 603/X = 241

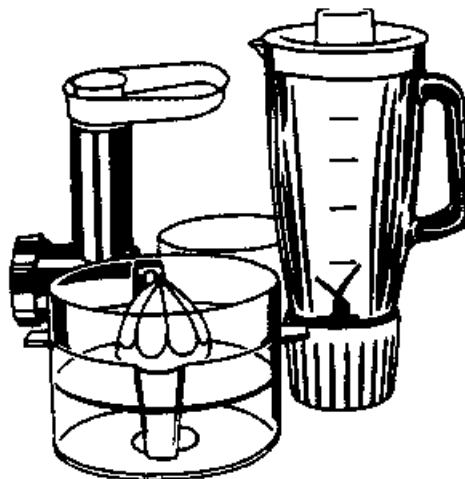
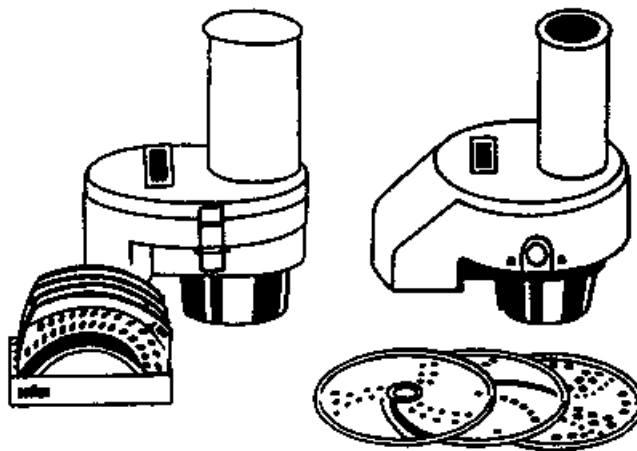
BINC Rev: 7/96

Service Documentation Service Information

BAG Rev: 8/85

4209

Attachments



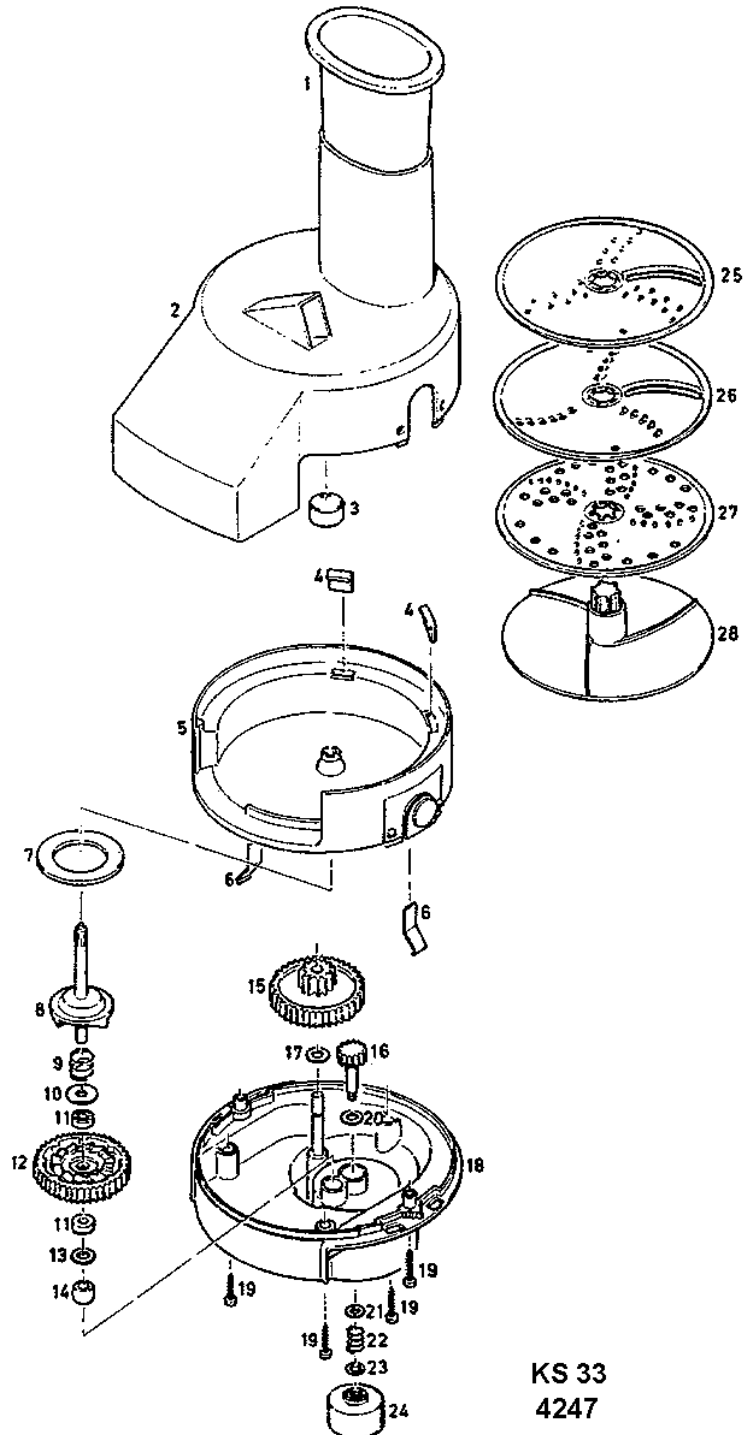
Shredder	KS 33	4247	
Meat Mincer	KGZ 2		4610
Citrus Juicer	KMZ 3	4612	
Shredder	KS 32	4613	
Liquidizer	KX 32	4614	
Coffee Grinder	MXK	4615	

BINC Rev: 7/96

Service Documentation Exploded Drawing

BAG Rev: 8/85

4247



KS 33
4247

BINC Rev: 7/96

Service Documentation

Spare Parts List

BAG Rev: 6/91

4247

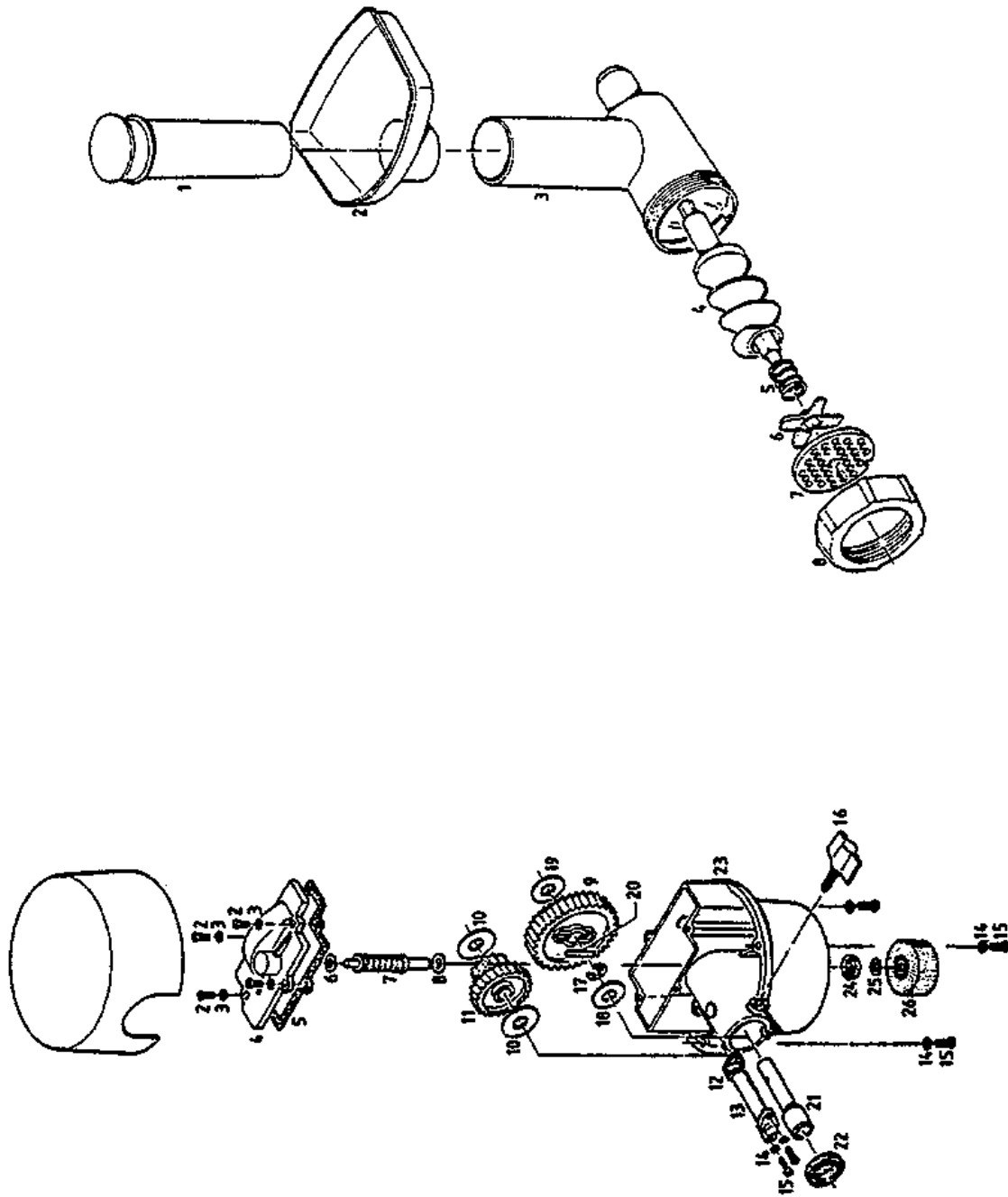
Pos. No.	Part Description	Part Number
1	Pusher	4207492
2	Lid with no. 3	4247851
3	Cap	4247022
4	Guide block	4247035
5	Upper housing cpl.	4247852
6	Flat spring	4247028
7	Felt washer	4242126
8	Driving shaft coupling	4247853
9	Spring	4247007
10	Washer	4247026
11	Thrust bearing	4247037
12	Gear wheel	4247015
13	Washer	4247025
14	Swivel bearing	4247024
15	Intermediate gear wheel	4247014
16	Pinion	4247016
17	Fibre washer	4247017
18	Lower housing	4247625
19	Screw	0031052
20	Fibre washer	4250082
21	Bronze washer	4213041
22	Spring	4203135
23	Washer	4213042
24	Coupling	4203055
25	Working disc I	4247047
26	Working disc II	4247048
27	Grater disc for potatoes	4247039
28	Carrier disc	4247858
-	Adapter for KMZ 3	4247038

BINC Rev: 7/96

Service Documentation Exploded Drawing

BAG Rev: 1/82

4610



KGZ 2
4610

BINC Rev: 7/96

Service Documentation

Spare Parts List

BAG Rev: 12/83

4610

Pos. No.	Part Description	Part Number
Gear Head for Meat Mincer		
1	Cover	4241020
2	Cheese-head screw	0003101
3	Split lock washer	0101001
4	Upper gear housing cover	4240803
5	Plain seal	4240012
6	Steel washer	4240021
7	Worm drive shaft	4240003
8	Fiber washer	4213040
9	Gear wheel	4240008
10	Fiber washer	4240004
11	Intermediate gear	4240022
12	Plain seat	4240025
13	Gear shaft	4240807
14	Split lock washer	NLA
15	Cheese head screw	NLA
16	Winged screw	4241003
17	Retainer ring	0109003
18	Bronze washer	4241014
19	Fiber washer	4241015
20	Straight pin	0120101
21	Shaft	4240009
22	Seal-ring	0104001
23	Lower housing	4240801
24	Seal-ring	0712001
25	Washer	4213042
26	Coupling	4203055

BINC Rev: 7/96

Service Documentation

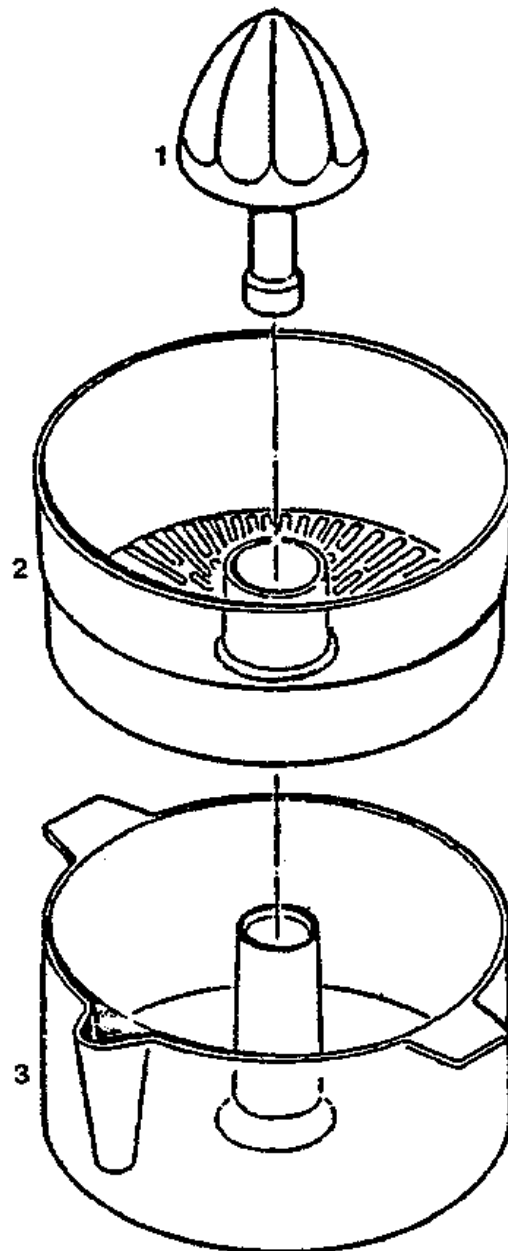
Spare Parts List

BAG Rev: 2/95

4610

Pos. No.	Part Description	Part Number
Meat Mincer attachment		
1	Tamper	4242 040
2	Meat tray	4241004
3	Housing	4240811
4	Worm screw	4240045
5	Spring	4242148
5	Spring	4242148
6	Cross shaped blade **	4242133
6	Cross shaped blade	4240048
7	Perforated disc, 4.5 dia.	4 195090
7	Perforated disc, 3.0 dia.	4 195091
7	Perforated disc, 8.0 dia.	4195092
8	Locking ring	4240050

**** Two sided applicable**



KMZ 3
4612

BINC Rev: 7/96

Service Documentation
Spare Parts List

BAG Rev: 10/86

4612

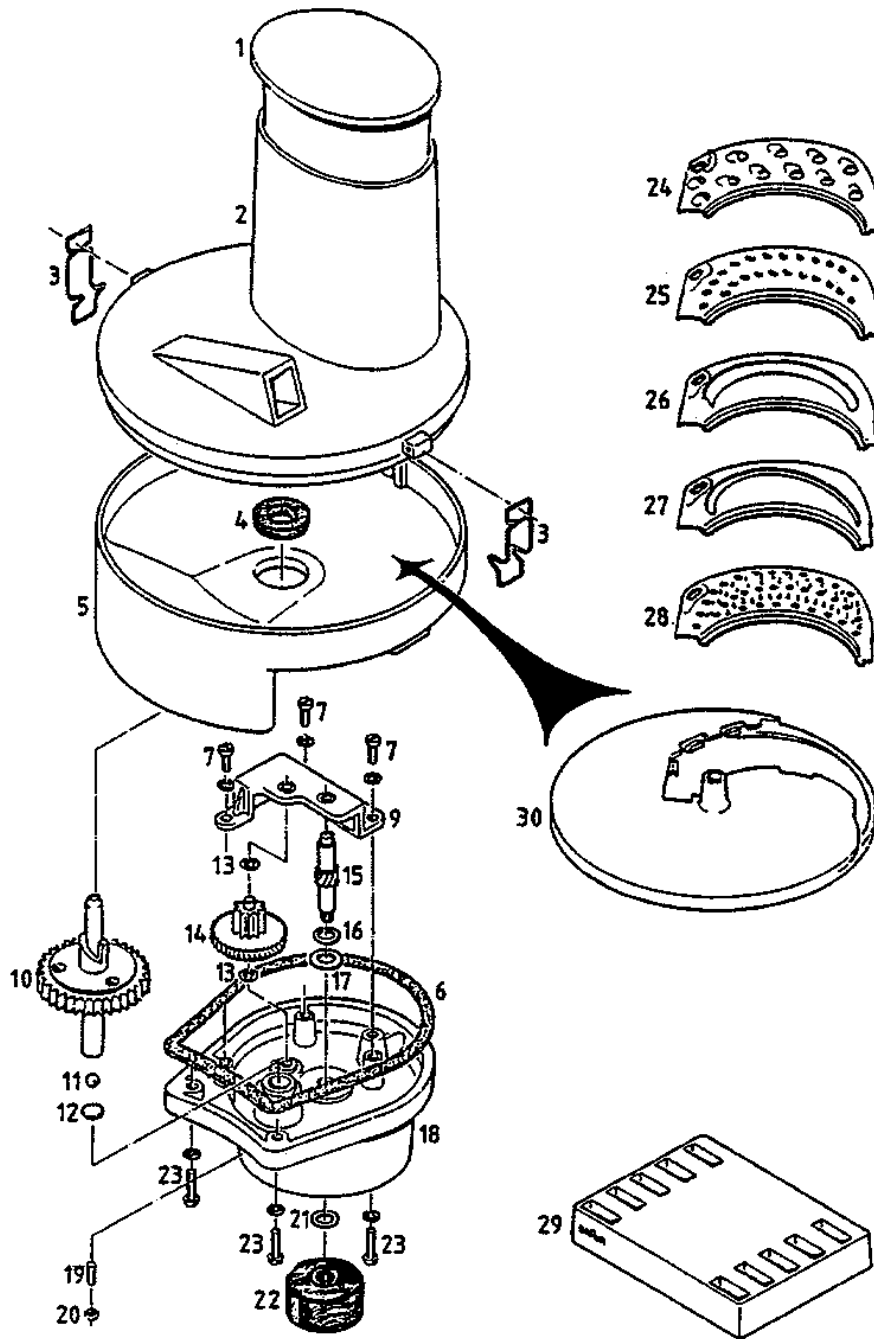
Pos. No.	Part Description	Part Number
1	Reamer cone	4207391
2	Strainer	4253285
3	Juice container	4253284
-	Adapter for KS 33	4247038

BINC Rev: 7/96

Service Documentation Exploded Drawing

BAG Rev: 1/82

4613



KS 32
4613

BINC Rev: 7/96

Service Documentation Spare Parts List

BAG Rev: 11/93

4613

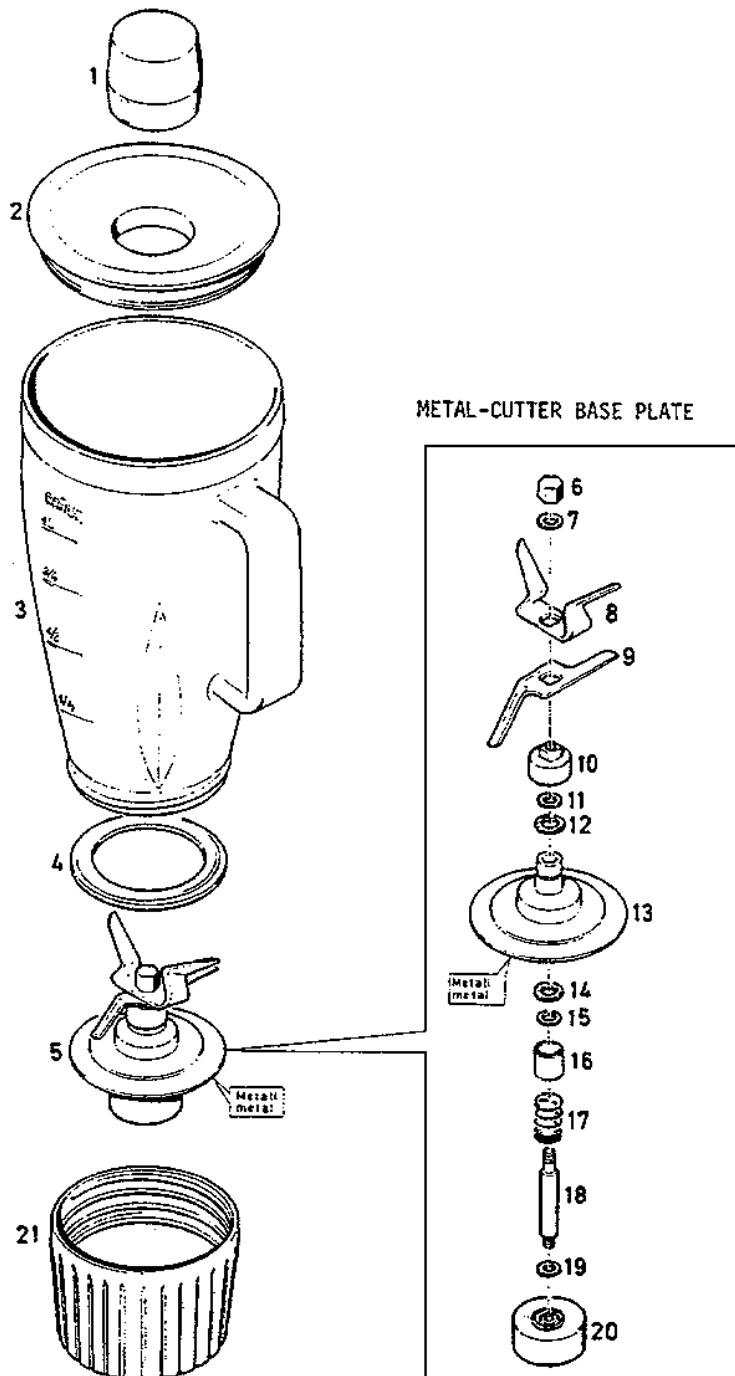
Pos. No.	Part Description	Part Number
1	Tamper (old with lid)	4207809
1	Tamper (new without lid)	4207492
2	Upper housing	NLA
3	Retaining clamp	4203270
4	Oil sealing ring	4207093
5	Lower housing	NLA
6	Plain seal	4203266
7	Screw	0003101
9	Bearing bracket	4203883
10	Output gear	4203884
11	Ball	0162003
12	Ball thrust plate	4203264
13	Washer	4203257
14	Intermediate gear	4203882
15	Drive shaft	4203254
16	Bronze washer	4213041
17	Fiber washer	4213040
	Bearing	4206047
18	Metal housing	4203881
19	Set screw	0016102
20	Nut	0061108
21	Washer	4213042
22	Coupling	4203055
23	Screw	0003170
24	Shredding insert, coarse	4207068
25	Shredding insert, fine	NLA
26	Slicing insert, coarse	4207070
27	Slicing insert, fine	4207071
28	Grating insert	4207072
29	Insert stand	4207094
30	Carrier disc	4207807

BINC Rev: 7/96

Service Documentation Exploded Drawing

BAG Rev: 5/84

4614



KX 32
4614

BINC Rev: 7/96

Service Documentation

Spare Parts List

BAG Rev: 12/85

4614

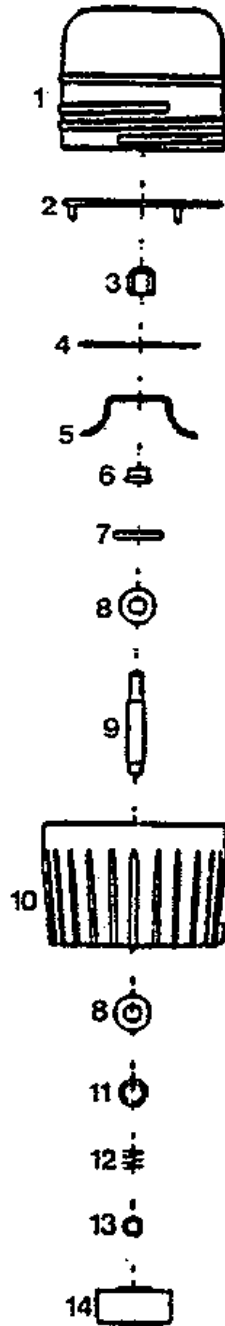
Pos. No.	Part Description	Part Number
1	Funnel plug	4207091
2	Lid	4207090
3	Glass goblet	4216865
4	Rubber gasket	4216209
5	Complete knife (6 - 20)	4216899
6	Cap nut	0064006
7	Washer (Steel)	4291014
8	Upper knife	4207088
9	Lower knife	4207087
10	Cover	4291006
11	Washer (Steel)	4291010
12	Washer (Fibre)	4250082
13	Cutter base plate (Metal)	4291650
14	Washer (Fibre)	4250082
15	Washer (Bronze)	4213041
16	Socket	4216213
17	Spring	4216212
18	Shaft	4216214
19	Washer (Steel)	4213042
20	Coupling	4203055
21	Knife retainer housing	4207835

BINC Rev: 7/96

Service Documentation Exploded Drawing

BAG Rev: 1/82

4615



MXK 3
4615

BINC Rev: 7/96

Service Documentation

Spare Parts List

BAG Rev: 12/88

4615

Pos. No.	Part Description	Part Number
1	Glass	4203136
2	Gasket (black)	4203219
3	Cap nut	4203139
4	Middle knife	4203133
4	Middle knife *	4209606
5	Lower knife	4203132
5	Lower knife *	4209605
6	Knife holder	4213039
7	Steel washer	4213038
8	Washer	4213040
9	Knife shaft	4207054
10	Threaded retainer housing with bottom	NLA
11	Bronze washer	4213041
12	Spring	4203135
13	Coupling washer	4213042
14	Coupling	4203055

* **Knife Sharpened**