

About the backup battery

To keep good time, as backup power source, this unit has one CR2032 battery inside of the unit in addition to the house current (The battery is supplied with the unit for East European model).

The battery keeps the clock and the alarm operating in the event of a power interruption.

Knowing when to replace the battery

When the battery becomes weak, "CO" indicator appears in the display.

In the event of a power interruption when the battery is weak, current time and alarm functions will be initialized.

Replace the battery with a Sony CR2032 lithium battery. Use of another battery may present a risk of fire or explosion.

Note for customers in Canada and Europe (except East Europe)

The clock is preset at the factory, and its memory is powered by the preinstalled Sony CR2032 battery. If the "AM 12:00" or "0:00" flashes on the display when the unit is connected to AC outlet for the first time, the battery may be weak. In this case, consult a Sony dealer. The preinstalled CR2032 battery is considered part of the product, and is covered by the warranty.

You are required to show "Note for customers in Canada and Europe (except East Europe)" (in this instruction) to a Sony dealer in order to validate the warranty for this product.

Installing and replacing the backup battery

- 1 Keep the AC plug connected to the AC outlet, remove the screw that secures the battery compartment at the bottom of the unit using a screwdriver, and remove the battery compartment. (See Fig. **1A**.)
- 2 Insert a new battery in the battery compartment with the **+** side facing up.
- To remove the battery from the battery compartment, push it out from the side marked PUSH. (See Fig. **1A**.)
- 3 Insert the battery compartment back into the unit and secure it with the screw. (See Fig. **1A**.)
- 4 When replacing the battery, press **RADIO ON** to turn "CO" indicator off in the display.

Note
If you replace the battery, do not disconnect AC plug from AC outlet.
Otherwise, current time and alarm will be initialized.

NOTES ON LITHIUM BATTERY

- Keep the lithium battery out of the reach of children.
 - Should the battery be swallowed, immediately consult a doctor.
 - Wipe the battery with a dry cloth to assure a good contact.
 - Be sure to observe the correct polarity when installing the battery.
 - Do not hold the battery with metallic tweezers, otherwise a short circuit may occur.
 - Do not expose the battery to excessive heat such as direct sunlight, fire or the like.
- CAUTION**
Danger of explosion if battery is incorrectly replaced. Replace only with the same or equivalent type recommended by the equipment manufacturer.
- Battery Warning**
When the unit will be left unplugged for a long time, remove the battery to avoid undue battery discharge and damage to the unit from battery leakage.

Setting the clock for the first time (except for East European model)

This unit is preset to the current date and time at the factory, and is powered by the back up battery. All you need to do the first time is just plug it in and select your time zone.

For European model (except East European model)

- 1 Plug in the unit. "month and date" (about 1 second) → "year" (about 1 second) → "the current CET (Central European Time)" appears in the display in turn.
- 2 Press **TIME ZONE**. "1" (area number) appears in the display for about 4 seconds. If you live in the Central European Time zone, you do not need to adjust the area setting.

Area number	Time zone
1	Central European Time/Central European Summer Time
2	Eastern European Time/Eastern European Summer Time
0	Western European Time/Western European Summer Time

- 3 Press **TIME ZONE** repeatedly until the desired number appears. The display returns to the clock about 4 seconds after the operation is complete.

For Canada model

- 1 Plug in the unit. "month and date" (about 1 second) → "year" (about 1 second) → "the current EST/EDT (Eastern Standard/Daylight Time)" appears in the display.
- 2 Press **TIME ZONE**. Area number "2" appears in the display. If you live in the Eastern Time zone, you do not need to adjust the area setting.

Area number	Time zone
1	Atlantic Standard/Daylight Time
2	Eastern Standard/Daylight Time (default)
3	Central Standard/Daylight Time
4	Mountain Standard/Daylight Time
5	Pacific Standard/Daylight Time
6	Yukon Standard/Daylight Time
7	Hawaiian Standard/Daylight Time

- 3 Press **TIME ZONE** repeatedly until the desired number appears. The display returns to the clock about 4 seconds after the operation is complete.

Features

- Dual alarm FM/AM Clock radio.
- Various types of alarms – radio and buzzer.
- Automatic time set – When you plug the clock in for the first time, the current time will be shown in the display (except for East European model).
- Automatic Daylight Saving Time/Summer time adjustment (except East European model).
- DST button to adjust Daylight Saving Time/Summer time (for East European model).
- Date button to display month, day and year.
- Brightness control (High/Middle/Low).
- No Power No Problem alarm system to keep the clock and the alarm operating during a power interruption with a CR2032 battery installed (except for East European model).
- Supplied CR2032 battery for backup power source to keep the clock and alarm operating during a power interruption (East European model only).
- Extendable snooze – snooze time can be extended from 10 to 60 minutes in maximum every time you use.

English

WARNING

To reduce the risk of fire or electric shock, do not expose this apparatus to rain or moisture. Do not use electrical shock, do not open the cabinet. Refer servicing to qualified personnel only. Do not install the appliance in a confined space, such as a bookcase or built-in cabinet.

FM/AM Clock Radio ICF-C318

Operating Instructions

Mode d'emploi

Bedienungsanleitung (Rückseite)

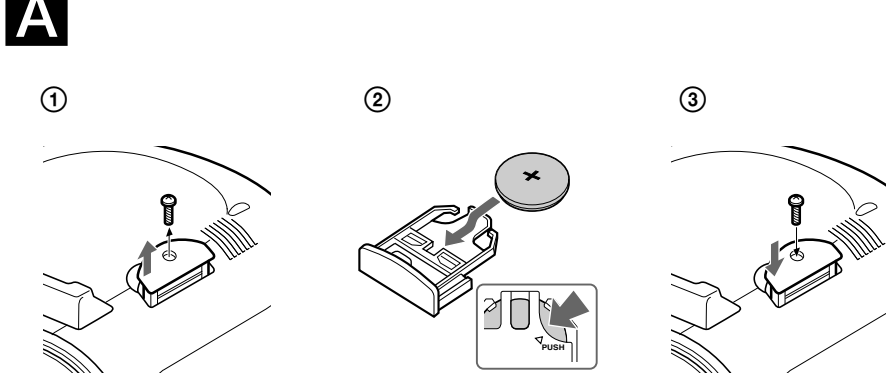
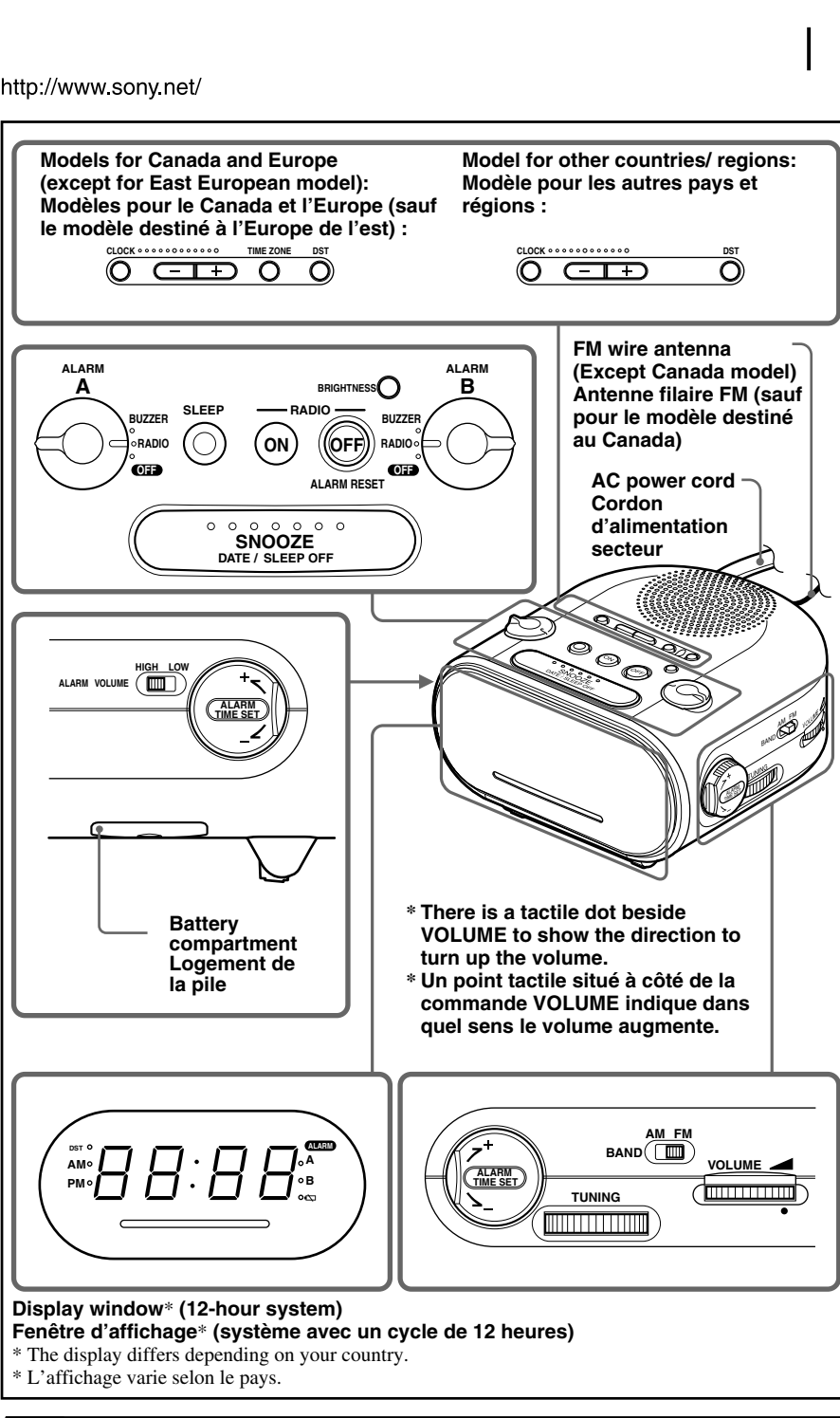
Manual de instrucciones (en el reverso)

DREAM MACHINE

Dream Machine is a trademark of Sony Corporation. Dream Machine est une marque de Sony Corporation. Dream Machine ist ein Warenzeichen der Sony Corporation. Dream Machine es marca comercial de Sony Corporation.

© 2006 Sony Corporation Printed in China

http://www.sony.net/



Setting the clock for the first time (except for East European model)

This unit is preset to the current date and time at the factory, and is powered by the back up battery. All you need to do the first time is just plug it in and select your time zone.

For European model (except East European model)

- 1 Plug in the unit. "month and date" (about 1 second) → "year" (about 1 second) → "the current CET (Central European Time)" appears in the display in turn.
- 2 Press **TIME ZONE**. "1" (area number) appears in the display for about 4 seconds. If you live in the Central European Time zone, you do not need to adjust the area setting.

Area number	Time zone
1	Central European Time/Central European Summer Time
2	Eastern European Time/Eastern European Summer Time
0	Western European Time/Western European Summer Time

- 3 Press **TIME ZONE** repeatedly until the desired number appears. The display returns to the clock about 4 seconds after the operation is complete.

For Canada model

- 1 Plug in the unit. "month and date" (about 1 second) → "year" (about 1 second) → "the current EST/EDT (Eastern Standard/Daylight Time)" appears in the display.
- 2 Press **TIME ZONE**. Area number "2" appears in the display. If you live in the Eastern Time zone, you do not need to adjust the area setting.

Setting the clock for the first time (except for East European model)

This unit is preset to the current date and time at the factory, and is powered by the back up battery. All you need to do the first time is just plug it in and select your time zone.

For European model (except East European model)

- 1 Plug in the unit. "month and date" (about 1 second) → "year" (about 1 second) → "the current CET (Central European Time)" appears in the display in turn.
- 2 Press **TIME ZONE**. "1" (area number) appears in the display for about 4 seconds. If you live in the Central European Time zone, you do not need to adjust the area setting.

Area number	Time zone
1	Central European Time/Central European Summer Time
2	Eastern European Time/Eastern European Summer Time
0	Western European Time/Western European Summer Time

- 3 Press **TIME ZONE** repeatedly until the desired number appears. The display returns to the clock about 4 seconds after the operation is complete.

For Canada model

- 1 Plug in the unit. "month and date" (about 1 second) → "year" (about 1 second) → "the current EST/EDT (Eastern Standard/Daylight Time)" appears in the display.
- 2 Press **TIME ZONE**. Area number "2" appears in the display. If you live in the Eastern Time zone, you do not need to adjust the area setting.

Setting the clock for the first time (except for East European model)

This unit is preset to the current date and time at the factory, and is powered by the back up battery. All you need to do the first time is just plug it in and select your time zone.

For European model (except East European model)

- 1 Plug in the unit. "month and date" (about 1 second) → "year" (about 1 second) → "the current CET (Central European Time)" appears in the display in turn.
- 2 Press **TIME ZONE**. "1" (area number) appears in the display for about 4 seconds. If you live in the Central European Time zone, you do not need to adjust the area setting.

Area number	Time zone
1	Central European Time/Central European Summer Time
2	Eastern European Time/Eastern European Summer Time
0	Western European Time/Western European Summer Time

- 3 Press **TIME ZONE** repeatedly until the desired number appears. The display returns to the clock about 4 seconds after the operation is complete.

For Canada model

- 1 Plug in the unit. "month and date" (about 1 second) → "year" (about 1 second) → "the current EST/EDT (Eastern Standard/Daylight Time)" appears in the display.
- 2 Press **TIME ZONE**. Area number "2" appears in the display. If you live in the Eastern Time zone, you do not need to adjust the area setting.

Setting the clock for the first time (except for East European model)

This unit is preset to the current date and time at the factory, and is powered by the back up battery. All you need to do the first time is just plug it in and select your time zone.

For European model (except East European model)

- 1 Plug in the unit. "month and date" (about 1 second) → "year" (about 1 second) → "the current CET (Central European Time)" appears in the display in turn.
- 2 Press **TIME ZONE**. "1" (area number) appears in the display for about 4 seconds. If you live in the Central European Time zone, you do not need to adjust the area setting.

Area number	Time zone
1	Central European Time/Central European Summer Time
2	Eastern European Time/Eastern European Summer Time
0	Western European Time/Western European Summer Time

- 3 Press **TIME ZONE** repeatedly until the desired number appears. The display returns to the clock about 4 seconds after the operation is complete.

For Canada model

- 1 Plug in the unit. "month and date" (about 1 second) → "year" (about 1 second) → "the current EST/EDT (Eastern Standard/Daylight Time)" appears in the display.
- 2 Press **TIME ZONE**. Area number "2" appears in the display. If you live in the Eastern Time zone, you do not need to adjust the area setting.

Setting the clock for the first time (except for East European model)

This unit is preset to the current date and time at the factory, and is powered by the back up battery. All you need to do the first time is just plug it in and select your time zone.

For European model (except East European model)

- 1 Plug in the unit. "month and date" (about 1 second) → "year" (about 1 second) → "the current CET (Central European Time)" appears in the display in turn.
- 2 Press **TIME ZONE**. "1" (area number) appears in the display for about 4 seconds. If you live in the Central European Time zone, you do not need to adjust the area setting.

Area number	Time zone
1	Central European Time/Central European Summer Time
2	Eastern European Time/Eastern European Summer Time
0	Western European Time/Western European Summer Time

- 3 Press **TIME ZONE** repeatedly until the desired number appears. The display returns to the clock about 4 seconds after the operation is complete.

For Canada model

- 1 Plug in the unit. "month and date" (about 1 second) → "year" (about 1 second) → "the current EST/EDT (Eastern Standard/Daylight Time)" appears in the display.
- 2 Press **TIME ZONE**. Area number "2" appears in the display. If you live in the Eastern Time zone, you do not need to adjust the area setting.

Setting the clock for the first time (except for East European model)

This unit is preset to the current date and time at the factory, and is powered by the back up battery. All you need to do the first time is just plug it in and select your time zone.

For European model (except East European model)

- 1 Plug in the unit. "month and date" (about 1 second) → "year" (about 1 second) → "the current CET (Central European Time)" appears in the display in turn.
- 2 Press **TIME ZONE**. "1" (area number) appears in the display for about 4 seconds. If you live in the Central European Time zone, you do not need to adjust the area setting.

Area number	Time zone
1	Central European Time/Central European Summer Time
2	Eastern European Time/Eastern European Summer Time
0	Western European Time/Western European Summer Time

- 3 Press **TIME ZONE** repeatedly until the desired number appears. The display returns to the clock about 4 seconds after the operation is complete.

For Canada model

- 1 Plug in the unit. "month and date" (about 1 second) → "year" (about 1 second) → "the current EST/EDT (Eastern Standard/Daylight Time)" appears in the display.
- 2 Press **TIME ZONE**. Area number "2" appears in the display. If you live in the Eastern Time zone, you do not need to adjust the area setting.

Setting the clock for the first time (except for East European model)

This unit is preset to the current date and time at the factory, and is powered by the back up battery. All you need to do the first time is just plug it in and select your time zone.

For European model (except East European model)

- 1 Plug in the unit. "month and date" (about 1 second) → "year" (about 1 second) → "the current CET (Central European Time)" appears in the display in turn.
- 2 Press **TIME ZONE**. "1" (area number) appears in the display for about 4 seconds. If you live in the Central European Time zone, you do not need to adjust the area setting.

Area number	Time zone
1	Central European Time/Central European Summer Time
2	Eastern European Time/Eastern European Summer Time
0	Western European Time/Western European Summer Time

- 3 Press **TIME ZONE** repeatedly until the desired number appears. The display returns to the clock about 4 seconds after the operation is complete.

For Canada model

- 1 Plug in the unit. "month and date" (about 1 second) → "year" (about 1 second) → "the current EST/EDT (Eastern Standard/Daylight Time)" appears in the display.
- 2 Press **TIME ZONE**. Area number "2" appears in the display. If you live in the Eastern Time zone, you do not need to adjust the area setting.

Setting the clock for the first time (except for East European model)

This unit is preset to the current date and time at the factory, and is powered by the back up battery. All you need to do the first time is just plug it in and select your time zone.

For European model (except East European model)

- 1 Plug in the unit. "month and date" (about 1 second) → "year" (about 1 second) → "the current CET (Central European Time)" appears in the display in turn.
- 2 Press **TIME ZONE**. "1" (area number) appears in the display for about 4 seconds. If you live in the Central European Time zone, you do not need to adjust the area setting.

Area number	Time zone
1	Central European Time/Central European Summer Time
2	Eastern European Time/Eastern European Summer Time
0	Western European Time/Western European Summer Time

- 3 Press **TIME ZONE** repeatedly until the desired number appears. The display returns to the clock about 4 seconds after the operation is complete.

For Canada model

- 1 Plug in the unit. "month and date" (about 1 second) → "year" (about 1 second) → "the current EST/EDT (Eastern Standard/Daylight Time)" appears in the display.
- 2 Press **TIME ZONE**. Area number "2" appears in the display. If you live in the Eastern Time zone, you do not need to adjust the area setting.

Setting the clock for the first time (except for East European model)

This unit is preset to the current date and time at the factory, and is powered by the back up battery. All you need to do the first time is just plug it in and select your time zone.

For European model (except East European model)

- 1 Plug in the unit. "month and date" (about 1 second) → "year" (about 1 second) → "the current CET (Central European Time)" appears in the display in turn.
- 2 Press **TIME ZONE**. "1" (area number) appears in the display for about 4 seconds. If you live in the Central European Time zone, you do not need to adjust the area setting.

Area number	Time zone
1	Central European Time/Central European Summer Time
2	Eastern European Time/Eastern European Summer Time
0	Western European Time/Western European Summer Time

- 3 Press **TIME ZONE** repeatedly until the desired number appears. The display returns to the clock about 4 seconds after the operation is complete.

For Canada model

- 1 Plug in the unit. "month and date" (about 1 second) → "year" (about 1 second) → "the current EST/EDT (Eastern Standard/Daylight Time)" appears in the display.
- 2 Press **TIME ZONE**. Area number "2" appears in the display. If you live in the Eastern Time zone, you do not need to adjust the area setting.

Setting the clock for the first time (except for East European model)

This unit is preset to the current date and time at the factory, and is powered by the back up battery. All you need to do the first time is just plug it in and select your time zone.

For European model (except East European model)

- 1 Plug in the unit. "month and date" (about 1 second) → "year" (about 1 second) → "the current CET (Central European Time)" appears in the display in turn.
- 2 Press **TIME ZONE**. "1" (area number) appears in the display for about 4 seconds. If you live in the Central European Time zone, you do not need to adjust the area setting.

Area number	Time zone
1	Central European Time/Central European Summer Time
2	Eastern European Time/Eastern European Summer Time
0	Western European Time/Western European Summer Time

- 3 Press **TIME ZONE** repeatedly until the desired number appears. The display returns to the clock about 4 seconds after the operation is complete.

For Canada model

- 1 Plug in the unit. "month and date" (about 1 second) → "year" (about 1 second) → "the current EST/EDT (Eastern Standard/Daylight Time)" appears in the display.
- 2 Press **TIME ZONE**. Area number "2" appears in the display. If you live in the Eastern Time zone, you do not need to adjust the area setting.

Setting the clock for the first time (except for East European model)

This unit is preset to the current date and time at the factory, and is powered by the back up battery. All you need to do the first time is just plug it in and select your time zone.

For European model (except East European model)

- 1 Plug in the unit. "month and date" (about 1 second) → "year" (about 1 second) → "the current CET (Central European Time)" appears in the display in turn.
- 2 Press **TIME ZONE**. "1" (area number) appears in the display for about 4 seconds. If you live in the Central European Time zone, you do not need to adjust the area setting.

Area number	Time zone
1	Central European Time/Central European Summer Time
2	Eastern European Time/Eastern European Summer Time
0	Western European Time/Western European Summer Time

- 3 Press **TIME ZONE** repeatedly until the desired number appears. The display returns to the clock about 4 seconds after the operation is complete.

For Canada model

- 1 Plug in the unit. "month and date" (about 1 second) → "year" (about 1 second) → "the current EST/EDT (Eastern Standard/Daylight Time)" appears in the display.
- 2 Press **TIME ZONE**. Area number "2" appears in the display. If you live in the Eastern Time zone, you do not need to adjust the area setting.

Setting the clock for the first time (except for East European model)

This unit is preset to the current date and time at the factory, and is powered by the back up battery. All you need to do the first time is just plug it in and select your time zone.

For European model (except East European model)

- 1 Plug in the unit. "month and date" (about 1 second) → "year" (about 1 second) → "the current CET (Central European Time)" appears in the display in turn.
- 2 Press **TIME ZONE**. "1" (area number) appears in the display for about 4 seconds. If you live in the Central European Time zone, you do not need to adjust the area setting.

Area number	Time zone
1	Central European Time/Central European Summer Time
2	Eastern European Time/Eastern European Summer Time
0</	

