

Lenco

USER'S MANUAL

XEMIO-760 BT MP3 / MP4 player with Bluetooth



For more information: www.lenco.com

Cautions

- Do not place naked flames, such as lighted candles on or near the product.
- Do not place objects filled with liquids, such as vases on or near the product.
- Do not use or store this product in a place where it is subject to direct sunlight, heat, excessive dust or vibration.
- Do not use this product with wet hands.
- Do not clean this product with water or other liquids.
- Do not block or cover the slots and holes in the product.
- Do not push foreign objects into the slots or holes in the product.
- Do not attempt to open this product yourself. There are no user serviceable parts inside.
- Do not allow children access to plastic bags.

Safety Warnings

- Before using this product, read and follow all warnings and instructions.
- This product is not intended for use by young children. Young children should be properly supervised.
- This product is intended for household use only and not for commercial or industrial use.
- Do not expose to dripping or splashing.
- No naked flame sources, such as lighted candles, should be placed on the product.
- Ventilation should not be impeded by covering ventilation openings with items such as newspapers, table cloths, curtains and the like.
- Make sure the unit is adjusted to a stable position. Damage caused by using this product in an unstable position or by failure to follow any other warning or precaution contained within this user manual will not be covered by warranty.

We, suggests retaining the packaging in case for future transport of the product.

If at any time in the future you should need to dispose of this product please note that: All batteries and accumulators need to be removed from this product (Removal of Waste Batteries and Accumulators).

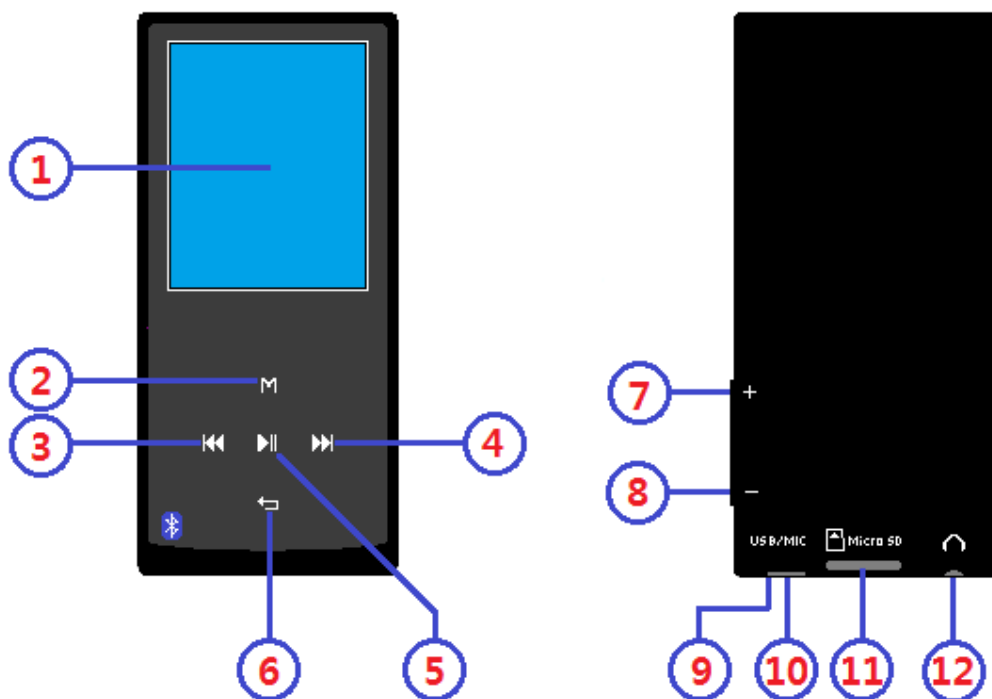


WARNING: When participating in the traffic listening to a personal music player can make the listener less aware of potential dangers such as approaching cars.



WARNING: To prevent possible hearing damage, do not listen at high volume levels for long periods.

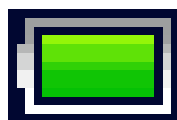
A. Get to know the controls on Player



Item	Description
1	TFT LCD Display (2 Inches, Color)
2	M Button (Call Menu / Submenu)
3	⏪ Button (Back / Fast-Rewind / Item Up)
4	⏩ Button (Next / Fast-Forward / Item Down)
5	▶ Button (ON / OFF, Play / Pause, Select / Enter)
6	↶ Button (Exit; Back to Previous Menu / Main Menu)
7	VOL + Button (Volume Up)
8	VOL - Button (Volume Down)
9	Microphone Position (Mono)
10	USB Micro Connector (PC Connection / Charge)
11	Memory Card Slot (for Micro/TF Card)
12	Earphone Output Jack (3.5mm Stereo)

B. About Player Battery

Player has an internal, non-user-replaceable battery. For best results, the first time you use player, let it charge for about 2 hours or until the battery status icon in the “Connect” screen shows that the battery is in full.



Battery is full

Note: Player may continue use battery power after it's been turned off. For maintain the battery life and performance, if unit isn't used for a while, the battery need to be recharged, recharging the battery at least once per month.

a. Charging the Battery:

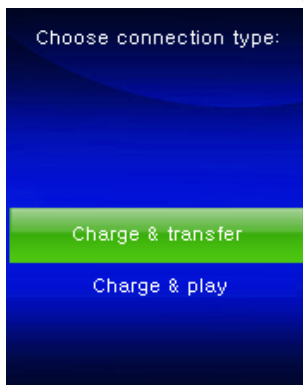
You can charge the player battery in two ways:

- Connect player to your computer. Or,
- Use the USB power charger. (*not included*)

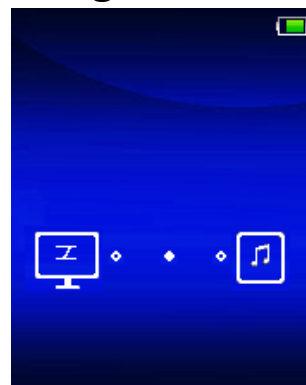
b. Connection and Charging:

- Once you have connected player with computer / power charger, then you will see the **“Choose connection type:”** screen appear to choose and it will switch to **“Charge & Transfer”** mode automatically if no action in 4 ~ 5 seconds.
- Choose **“Charge & Transfer”** to upload or download the media files with your computer and charging the Player’s battery.
- Choose **“Charge & Play”** to operates the Player’s function and the battery charging in background.
- The level bars are running in battery icon at the **“Connect”** screen. The battery is in charging.

“Choose connect type”



“Charge & Transfer”



or

“Charge & Play”



In Charging



Important: The battery does not charge when your computer is in sleep. The USB port on most keyboards does not provide enough power to charge the player. Connect player to a USB 2.0 port on your computer only to prevent charge problem.

C. Connecting and Disconnecting Player

a. To Connecting Player:

- To connect player to your computer, plug the connector of USB Cable into a USB port on your computer, and connect the other end to player,
- Then the player is ready for media files transfer with your computer and the battery is charging when **“Charge & Transfer”** mode is selected. And the **“Connect”** screen is appearing for view.
- Now you can transfer the media files by using the computer mouse use drag and place, or copy and paste, in between the player and your computer.

b. To Disconnecting Player:

It's important not to disconnect player while it's syncing or transferring files. Eject the player before disconnect it.

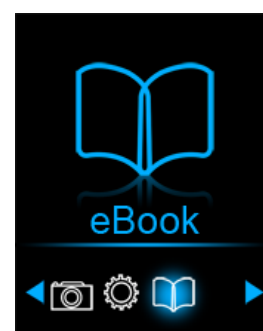
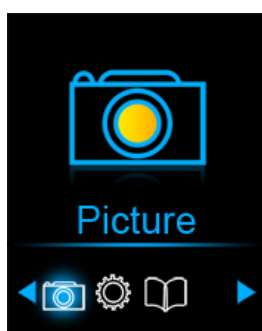
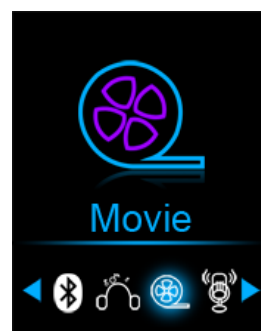
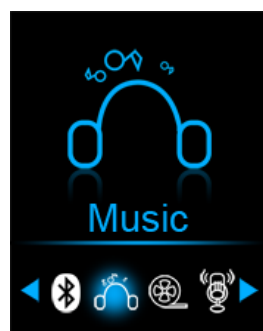
- To eject player, press once **M** button, the **"Connect"** screen will switch to **"Main Menu"** screen. And now is safe to disconnect the player with your computer. Unplug the USB cable from the player. Or,
- If you're using a Windows PC, you can also eject player in My Computer or by clicking the **"Safely Remove Hardware"** icon in the Windows system tray, select the correspondence name of USB Device and choose "Stop" > choose "Confirm" > choose "Confirm" follow by the pop-up windows you're your computer.
- If you're using a Mac, you can also eject player by dragging the player icon on the desktop to the Trash.
- Disconnect the USB cable from the player and computer, simply remove it.
- If you accidentally disconnect player without ejecting it, reconnect it to your computer and sync again. However, some media file may loss.

D. Getting Start the Player

Turn ON / OFF the player and use of Main Menu:

- To turn ON the player, press and hold the ►|| button for 3 seconds, then you will see any one of the following shown Main Menu screen, **"Bluetooth / Music / Movie / Record / Picture / Setup / eBook"**, will appear on LCD after the Loading and Opening screen have displayed.
- To turn OFF the player, press and hold the ►|| button for 3 seconds.

"Main Menu" screens

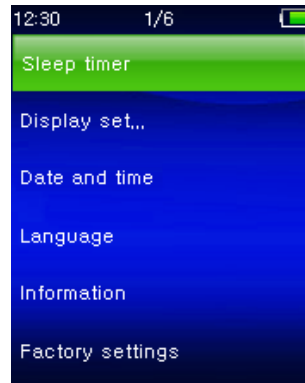


E. Use Setup Menu

You might need to set date & time or change some default setting as you desired in setup menu before you start to use the player.

- To go into setup menu, from main menu, choose **“Setup”** by using ◀◀ / ▶▶ and ▶| buttons, a **“Setup”** menu appears to use;
- For back to previous menu or main menu, press or pressing ↶ button during in setup menu and submenu.

“Setup” Menu



a. Sleep timer:

- In Setup menu, choose **“Sleep timer”**, by using ◀◀ / ▶▶ and ▶| buttons then choose **“Off”** to switch off it. (factory default is “Off”)
- In Setup menu, choose **“Set sleep timer”** to switch On the sleep timer, a levels bar with number appear to use, then choose **“1 ~ 99”** (Minutes) as you want by using ◀◀ / ▶▶ buttons and ▶| buttons.
- The Player will turn off itself automatically as your desired time set.

b. Display settings:

You can set the backlight to illuminate the screen for a certain amount of time as you desired, or make the backlight to “always On” when every time you turn ON the player.

- In Setup menu, choose **“Display settings”** > choose **“Backlight timer”**, a list appear to use, then chose **“Always On / 10 / 20 / 30 seconds”** as you desired by using ◀◀ / ▶▶ buttons and ▶| buttons. Choose **“Always On”** to prevent the LCD backlight from turning to off. (choosing this option decrease battery performance)
- Choose **“Screen saver”** > choose **“Digital clock”** or **“Screen off”** to turn On and Off the screen saver function. Chosen digital clock to display the date and time when the screen saver if in On.

c. Date & Time:

- In Setup menu, choose **“Date and time”** by using ◀◀ / ▶▶ button and ▶| button, a list appears to use.

Set Time

- Choose **“Time settings”** to set clock, then choose **“Set time format”** or **“Set time”** as you want;

- Choose **“Set time format”** then choose **“12 Hours / 24 Hours”** show format as you desired.
- Choose **“Set time”**, a clock interface will appear to set;
- The **“Hour / Minute”** set item is highlighted, press **M** button to switch in between Hour and Time which you want to set. And adjusting hour and minute to current time by pressing the **◀◀ / ▶▶** button.
- Finally, you need to press the **▶|** button to confirm the adjustment and the screen will back to previous menu.

Set Date

- Choose **“Date settings”** to date, then choose **“Set date format”** or **“Set date”** as you want;
- Choose **“Set date format”** then choose **“MM DD YYYY / YYYY MM DD”** which format as you desired.
- Choose **“Set date”**, a date interface will appear to set;
- The **“MM / DD / YY”** set item is highlighted, press **M** button to switch in between day, month and year which you want to set. And adjusting them to current date by pressing the **◀◀ / ▶▶** button.
- Finally, you need to press the **▶|** button to confirm the adjustment and the screen will back to previous menu.

d. Language:

This player can use difference OSD languages.

- To set the language, choose **“Language”**, and then choose which language as you desired by using **◀◀ / ▶▶** buttons and **▶|** button.

e. Information:

You can view about the player information and disk memory status, such as firmware version, remaining memory space available and the number of support media files available in player.

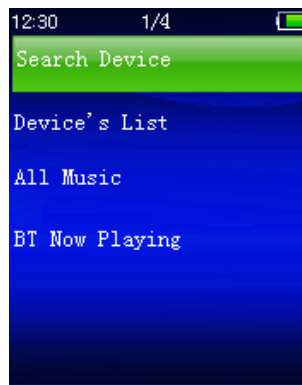
- In Setup menu, choose **“Information”** by using **◀◀ / ▶▶** button and **▶|** button, a list appears to use.
- Choose **“Player information”** or **“Disk space”** which you want to view.

f. Factory Settings:

- In Setup menu, choose **“Factory settings”**, a dialog **“Restore factory settings?”** will pop up to confirm;
- Choose **“Yes”** to confirm. Or, **“No”** to abort.
- Press **↩** button to exit Setup menu.


F. Use Bluetooth Menu

- From main menu, choose **“Bluetooth”** menu by using **◀◀ / ▶▶** and **▶|** buttons, a Bluetooth list menu **“Search Device / Device’s List / All Music / BT Now Playing”** is appear to choose;

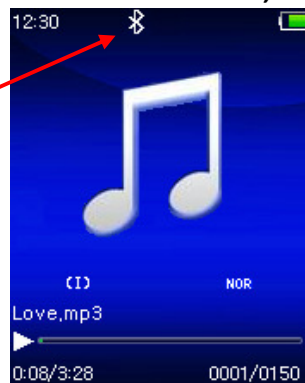


- Before pairing, please make sure your Bluetooth Receiver Device supports Bluetooth A2DP profile.
- Keep the device in 1 meter of your Bluetooth receiver device.
- Switch on your Bluetooth receiver device and enable it to searching / pairing mode.

a. Search Device

- Choose **“Search Device”** to enter into the Bluetooth searching mode by using ◀◀ / ▶▶ and ▶|| buttons on player, the device searching mode is starting, for approximate 10 ~ 20 seconds, a device(s) name list will appear to choose for pairing.
- Choose the device’s name which you want to pair then choose **“Pair/Connect”** by using ◀◀ / ▶▶ and ▶|| buttons, wait for few seconds both device should be paired and the first song in music list will playing automatically from you Bluetooth receiver device. And,
- The screen is switch to **“BT Now Playing”** interface and a Bluetooth icon “” is displaying at the information bar, the Bluetooth is in transmitting.

Bluetooth Transmission is On



- To search for new Bluetooth Device;
- Before you search for new device, please disconnect the current paired device. For better result, turn the paired Bluetooth receiver to power off.
- Choose **“Search Device”** the device searching mode will start again for new device(s) name list to choose again;
- Choose new found and wanted Bluetooth receiver device for pairing.

b. Device’s List

- Choose **“Device’s List”** to enter into the paired device list, you can

disconnect or un-pair it, also can re-connect those devices if it's in operating range.

- In device's list, choose the device's name and choose you desired function "**Disconnect**" or "**Connect / Unpair**" as you want. However, make sure that you have disconnected the linking device before connect the new wanted device.
- Reconnect a pair Bluetooth device;
- Automatically connecting: every time when turn "**On**" the Bluetooth transmission function, it will automatically reconnect to the last connected device if the receiver device is still in reconnect mode. However, some Bluetooth receiver device may need to turn it "**Off and On**" again for reconnecting. If not;
- Manual connecting: some Bluetooth receiver device may need to reconnect manually; turn it power Off and On again for reconnecting. Or;
- Choose "**Device's List**" again by using ◀◀ / ▶▶ and ▶|| buttons, then choose the known device and choose "Connect" for reconnecting.

c. **All Music**

- Choose "**All Music**" to enter into music list, you can direct select the wanted music for play and transmitting by using ◀◀ / ▶▶ and ▶|| buttons

d. **BT Now Playing**

- Choose "**BT Now Playing**" to return now playing interface.
- In "BT Now Playing" interface, you can selects; Previous / Next song file, Play / Pause the song and adjust the Volume Up/Down by using the ◀◀ / ▶▶, ▶|| and + / - buttons.

To Recall the Bluetooth's Submenu / Exit Bluetooth Function

- Press ↵ button, to recall the Bluetooth's submenu. Or,
- Pressing ↵ button until a "**Exit BT Transmission?**" dialog appear for confirm. Choose "**Yes**" to exit by using ◀◀ / ▶▶ and ▶|| buttons, the Bluetooth function will turn Off and return to main menu screen. Choose "**No**" to abort.

Bluetooth Function Limitation:

1. When you turn the player into Bluetooth audio transmitting mode, the player earphone output sound will turned to Off automatically;
2. OGG & ACE are not support for Bluetooth audio transmission function.

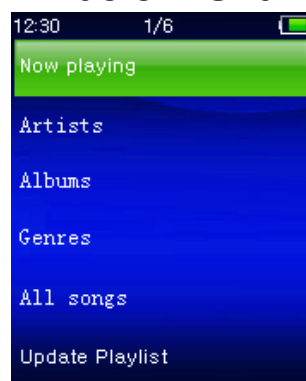
G. Use Music Menu

You can use this music player to playback with almost full format of music file of audio coding. To open the music player in Main Menu:

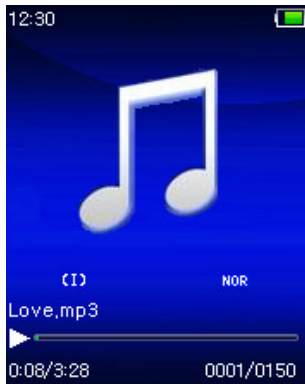
- From main menu, choose **“Music”** by using ◀◀ / ▶▶ and ▶|| button, a list menu appears to use;
- Choose **“Artists / Albums / Genres / All song / Update Playlist”** as you desired;
- Choose **“Artists”** to enter folder(s) list menu grouping by Artist name, then choose who name of Artist folder > choose a song file in list where start the play.
- Choose **“Albums”** to enter folder(s) list menu grouping by Album name, then choose who name of Album folder > choose a song file in list where start the play.
- Choose **“Genres”** to enter folder(s) list menu grouping by Genres name, then choose who name of Genres folder > choose a song file in list where start the play.
- Choose **“All song”** to enter all songs list menu to select a song where start the play. (Depend on current location of Local Folder and Card Folder last chosen. And default is Local folder if Micro SD card is not inserted)
- Choose **“Update playlist”** to update the playlist when you found it show incorrect; actually, it is normal due to some media files could be manual deleted in player’s memory by user in some case. However, update the playlist when necessary.
- Choose **“Local Folder”** to use player’s internal memory as current location, you will see all supported song files will list out in playlist when item selected.
- Choose **“Card Folder”** to use Micro SD Card memory as current location, you will see all supported song files will list out in playlist when item selected. However, a “Create list or not” will appear to confirm when every time the Micro SD Card is plug in and used. Choose “Yes” to process, a playlist will be generated for use. Choose “No” to abort.

Remark: The **“Local Folder”** and **“Card Folder”** items are will be existed only in music menu when Micro SD card has plugged into the player.

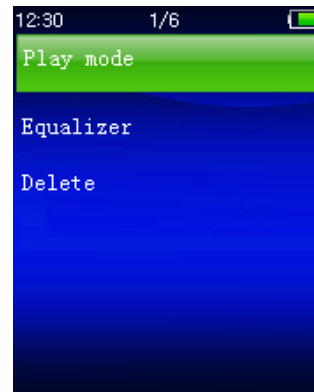
“Music Menu”



“Music Now Playing Interface”



“Music Submenu Menu”



To Play Music

- In **Artists / Albums / Genres / All song list menu**, choose a song file to start the play using by using ◀◀ / ▶▶ and ▶|| button. Then the Music interface will appear to view and use;

Play / Pause Song

- In music now playing interface;
- Press ▶|| button to pause the playing music. Press it again to play.

Next / Fast-forward and Previous / Fast-backward Song file

- Press ▶▶ button to play next music.
- Press ◀◀ button to play previous music.
- Press and hold ▶▶ button to use fast-forward
- Press and hold ◀◀ button to use fast-backward.

Adjust volume level

- Press or pressing + / - button to adjust volume levels to up / down and a volume control screen is appear for viewing.
- Wait for 6 seconds or press ↶ button to return to music now playing screen.

***For hearing protection;** a beep warning will be heard from earphone, or display warning pop-up on TFT screen, when every time you increase the volume level and reach to the default setting level which may exceed 85dB. Press **M** button to accept the warning and enter into the volume control for increase the level and until to maximum level.*

Use Lyric Display

This player supports “*.LRC” lyric files and lyrics can synchronous displayed while playing music if you music has lyric included.

- When the playing music included with lyrics file, then the lyrics display mode will switched on automatically and the lyrics will display at the music now playing interface.

H. Music Submenu

- In music now playing interface, press **M** button to enter to music submenu, a music submenu **“Play mode / Equalizer / Delete”** is appear to choose;

a. Play Mode:

- In Music submenu, choose **“Play mode”**, a list menu **“Repeat / Shuffle”** appears to choose;
- Choose **“Repeat”** > choose **“Normal / Repeat 1 / Repeat all / Intro”** as you desired play mode by using **◀◀ / ▶▶** and **▶||** buttons.
- Choose **“Shuffle”** > choose **“off / On”** as you desired.

b. Equalizer

- In Music submenu, choose **“Equalizer”**, then choose **“Normal / Rock / Funk / Hip hop / Jazz / Classical / Techno”** as you desired sound effect by using **◀◀ / ▶▶** and **▶||** buttons.

c. Delete:

- In Music submenu, choose **“Delete file”** by using **◀◀ / ▶▶** and **▶||** buttons;
- A **“song name...”** delete? dialog is appear to confirm, choose **“Yes”** to confirm delete the current song file in memory;
- A **“deleting”** dialog is appears for few seconds and the current song file is deleted. And the next song’s file is selected to play automatically.
- Choose **“No”** to abort.

I. Movie Menu

To Play Movie

- From Main Menu, choose **“Movie”** by using **◀◀ / ▶▶** and **▶||** buttons, a files list appears to choose;
- Choose the desired movie file to start the play and the screen switch to movie now playing screen. The movie is playing automatically.

Play /Pause Movie

- In movie now playing screen, press **▶||** button to pause the playing.
- Press it again to continue the play.
- Press **↶** button to go back files list screen for choose another movie file to play if you want it.

Play Previous or Next Movie file

- Press **▶▶** button to play next movie file.
- Press **◀◀** button to play previous movie file.

Fast-Forward or Fast-Backward

- Press and hold **▶▶** button to play fast-forward.
- Press and hold **◀◀** button to play fast-backward.

Adjust Volume Level

- In movie now playing screen,
- Press or pressing + to increase the volume level.
- Press or pressing - button to decrease the volume level.

J. Use Movie Submenu

You might need to change the play mode or delete some unwanted movie files. To do this:

- In **movie now playing** screen, press **M** button, a movie submenu **“Repeat / Delete video / Update Playlist”** is appear to choose;

a. Repeat:

- Choose **“Repeat”** > choose **“Repeat off / Repeat 1 / Repeat all”** as you desired play mode by using ◀◀ / ▶▶ and ▶|| buttons.

b. Delete Video:

- Choose **“Delete Video”** by using ◀◀ / ▶▶ and ▶|| buttons;
- A **“video name...”** delete? dialog is appear to confirm, choose **“Yes”** to confirm delete the current song file in memory;
- A **“deleting”** dialog is appears for few seconds and the current song file is deleted. And the next movie’s file is selected to play automatically.
- Choose **“No”** to abort.

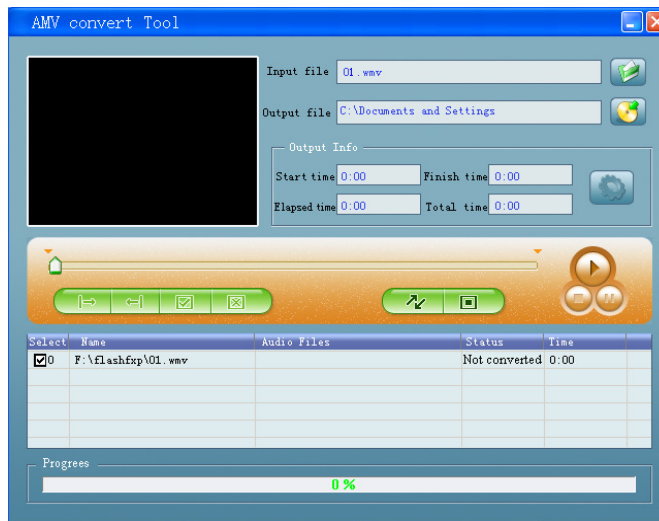
c. Update playlist:

- Choose **“Update playlist”** to update the playlist when you found it show incorrect; actually, it is normal due to some media files could be manual deleted in player’s memory by user in some case. However, update the playlist when necessary.






K. Convert Video files into AVI

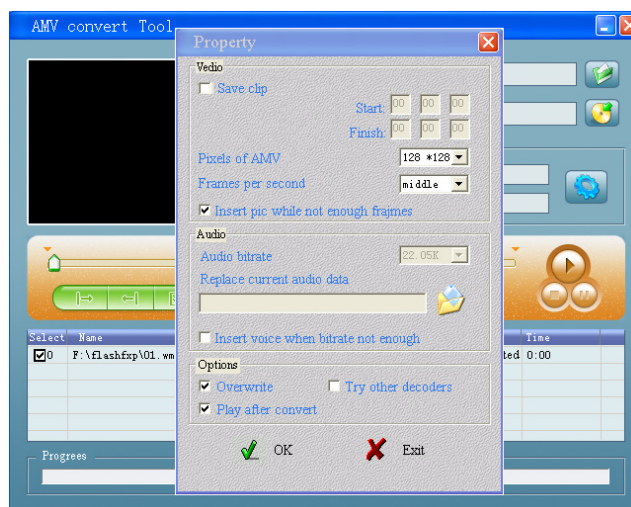
This tool can be used to transform those support video files into AVI files on the computer before you upload them to you player.


- To install this video convert tool to your computer, click **“Utilities > video conversion software”** in provided CD. (or stored in your Player)
- Select **“Setup”** to start the install program, the software will automatically install to your computer.
- After installation is done, open AVI converter tool on the PC

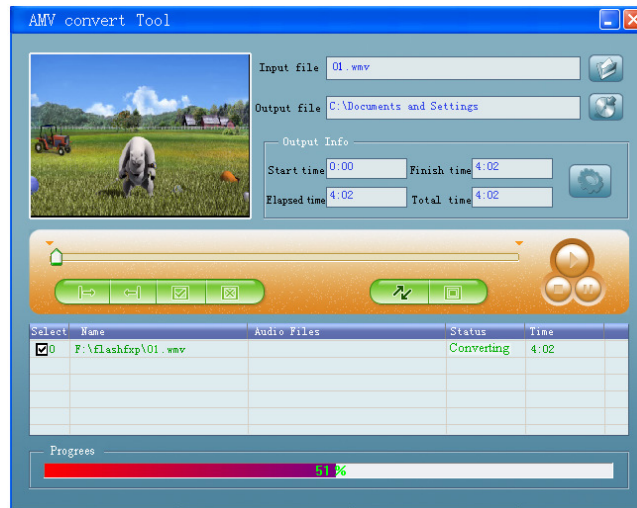


Noted: This program is used to convert video files into AVI format, currently only AVI format is supported.

- Run **“AMV & AVI Video Converter”**, click  to choose the folder where to save the AVI files, and then click  to select the folder where the original files are. The original file will show in the file window once selected.
- Select with highlight the unprocessed AVI files in the file window, the  icon will be highlighted into . And then click  icon and a dialog box will be shown.



- Choosing pixels of AVI to **“320 x 240 / 208 x 176”** and Frames per second to **“middle / high”**, then click OK to confirm.
- Click  to start converting.



- After conversion, the AVI files will play automatically for preview.
- And now the converted AVI file is ready to transfer, you can simply copy and place those converted AVI files to the media player.

L. Use Record Menu

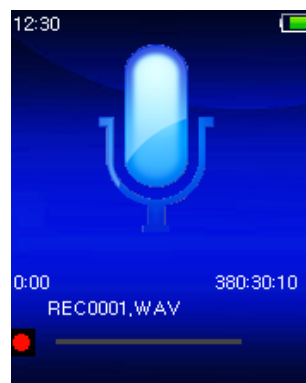
You can use the player as a Voice Recorder and recording voice memos using the built-in microphone. Besides, look for the recorded file(s) and playback them in same menu. To do this:

- From main menu, choose **“Record”** by using **⏪ / ⏩** and **M** buttons, a list menu appear to choose;

a. Start Voice Recording:

- From list menu, choose **“Start Voice Recording”**, a **“Now Recording”** screen appear to view and it is in recording;

“Now Recording” Screen



To Start / Pause Recording

- In recording mode, press **▶||** button to pause the recording.
- Press **▶||** button again to start the recording again.

To Save and Stop Recording File

- Press **↵** button, a **“save recording?”** dialog pop up to confirm;
- Choose **“Yes”** to confirm, the recorded file will save into memory and back to the list menu for next action.
- Choose **“No”** to abort.

b. Recordings Library: (Playback Recorded file)

- From list menu, choose **“Recordings Library”**, a list menu appear to choose;

For delete all recorded files from Player’s

- Choose **“Delete All”** to remove all the recorded files from the Player’s memory if you wish. Once choose it, a dialog pop to confirm.
- Choose **“Yes”** to delete all files. Or, choose **“No”** to abort.

For playback recorded file(s)

- From list menu, choose a desired recorded file (RECxxx.*) to start the play by using ◀◀ / ▶▶ and ▶|| buttons;
- The screen will switch to **“Library Now Playing”** and the selected file will start to play.

Play / Pause file

- In library now playing interface;
- Press ▶|| button to pause the playing file. Press it again to play.

Next / Fast-forward and Previous / Fast-backward Song file

- Press ▶▶ button to play next file.
- Press ◀◀ button to play previous file.
- Press and hold ▶▶ button to use fast-forward
- Press and hold ◀◀ button to use fast-backward.

Adjust volume level

- Press or pressing + / – button to adjust volume levels to up / down and a volume control screen is appear for viewing.
- Wait for 6 seconds or press ↶ button to return to music now playing screen.

For delete current playing file

- In library now playing screen, press **M** button to call submenu, then choose **“Delete”** by using ◀◀ / ▶▶ and ▶|| buttons;
- A **“RECxxx.*” delete?** dialog is appear to confirm, choose **“Yes”** to confirm delete the current playing file in memory;
- A **“deleting”** dialog is appears for few seconds and the current playing file is deleted. And the next file is selected to play automatically.
- Choose **“No”** to abort.

c. Record Format:

- From list menu, choose **“Record Format”** > Choose **“MP3 / WAV”** as you desired for recording.

d. Record Settings:

- From list menu, choose **“Record Settings”** > Choose **“Set REC bitrate”**, a list menu appear to choose;
- Then choose **“32kbps/ 64kbps / 128kbps / 192kbps”** if MP3 record format is chosen. Or,

- Choose **“512kbps / 768kbps / 1536kbps”** if WAV record format is chosen.

Remark: higher number of kbps will higher the recording quality but will use more memory capacity in recording file.

M. Use Picture Menu

You can use the player as picture / photo viewer, to browse picture / photo file:

- From main menu choose **“Picture”** by using ◀◀ / ▶▶ and ▶|| button, a list menu appear to use;

Play Picture file

- In list menu, choose a file to start the play.
- Press ↶ button to go back to list menu for other file selection.

Change previous / next picture

- Press ▶▶ button to next picture.
- Press ◀◀ button to previous picture.

Slideshow play

- Press ▶|| button to enter into slideshow mode, those picture files will play file by file according to slideshow settings in submenu.
- Press ▶|| button to cancel the slideshow mode.
- Pressing ↶ button to back to main menu.

N. Use Picture Submenu

You might need to change some settings for picture browse. To change setting:

- In file list menu or picture playing mode, press **M** button to call up the picture submenu, a list **“Slideshow settings / Delete picture / Update Playlist”** appear to choose;

a. Slideshow settings:

Time per slide

- Choose **“Slideshow settings”** > Choose **“Time per slide”**, a levels bar with number appear to use, then choose **“02 ~ 30”** (seconds) as you want by using ◀◀ / ▶▶ buttons and ▶|| buttons.

Repeat

- Choose **“Repeat”** > choose **“Off / On”** as you desired. The repeat all files function will activate if “On” is chosen.

b. Delete picture:

- Choose **“Delete”**, a “file name.*” delete? dialog is appear to confirm, choose **“Yes”** to confirm delete the selected file or current playing file in memory;
- A **“deleting”** dialog is appears for few seconds and the current playing file

is deleted. If in file playing, the next file is selected to play automatically.

- Choose **“No”** to abort.

c. Update Playlist:

- Choose **“Update Playlist”** to update the playlist when you found it show incorrect; actually, it is normal due to some media files could be manual deleted in player’s memory by user in some case. However, update the playlist when necessary.

O. Use eBook Menu

You can use the player as a text reader with supported file format (.TXT).

To open eBook:

- From main menu, choose **“eBook”** by using ◀◀ / ▶▶ and ▶|| buttons, a file(s) list menu appears to choose;

Play eBook file

- Choose a file which you want to start the read.
- Press ↶ button to go back to list menu for other file selection.

Change previous / next page in eBook file

- In eBook play mode;
- Press ▶▶ button to next page.
- Press ◀◀ button to previous page.

Auto page flip

- Press ▶|| button to enter into auto page flip function, the reading page will flip according to desired time set of play settings in submenu.
- Press ▶|| button to cancel the auto page flip function.
- Pressing ↶ button to back to main menu.

P. Use eBook Submenu

You might need to change some settings for eBook read. To change setting:

- In file list menu or eBook playing mode, press **M** button to call up the eBook submenu, a list **“Play settings / Delete eBook / Bookmark Select / Delete bookmark / Add bookmark / Page select”** appear to choose;

a. Play settings:

- Choose **“Play settings”**, a levels bar with number appear to use, then choose **“02 ~ 30”** (seconds) as you want by using ◀◀ / ▶▶ buttons and ▶|| buttons.
- The eBook reading page will auto flip according the selected time gap here when you activated the auto page flip function.

b. Delete eBook:

- Choose **“Delete”**, a **“file name.*” delete?** dialog is appear to confirm, choose **“Yes”** to confirm delete the selected file or current reading file in memory;
- A **“deleting”** dialog is appears for few seconds and the current playing file is deleted. If in file playing, the next file is selected to play automatically.
- Choose **“No”** to abort.

c. **Bookmark Select:**

- Choose **“Bookmark select”** by using **⏪ / ⏩** and **▶** button, a bookmarked list appear to choose;
- Choose a stored bookmark which you want to call and then press **▶** button to read. (add bookmark(s) before you use it.

d. **Delete Bookmark:**

- Choose **“Delete Bookmark”**, a bookmarked list appear to choose;
- Choose a bookmark file which you to delete, then a **“Whether to delete?”** dialog is appears to confirm;
- Choose **“Yes”** to confirm. Or, choose **“No”** to abort.

e. **Add Bookmark:**

- In eBook reading mode, choose **“Add Bookmark”**, a **“Whether to add?”** dialog is appear to confirm;
- Choose **“Yes”** to confirm and the current reading page will bookmark into list and stored in memory for use when the bookmark select function.
- Choose **“No”** to abort.

f. **Page Select:** (goto page)

- Choose **“Page Select”**, a list menu appear to choose;
- Choose your desired number of page where go to by using **⏪ / ⏩** and then press **▶** button, the page will direct to desired page from current reading page.
- However, system defaulted range of number can be selected is limited, which mean you may not go into the exactly number of page.

Remark: For example; $P_1 = \text{page } 1$: $p_{5 \times 10} = \text{page } 50$: $P_{68 \times 10} = \text{page } 680$, please refer to the appeared list in Page Select function.

Q. **Use Memory Card Slot**

This player allows you to play those support media files from your Micro SD memory card (T-Flash). Also it will increase the mobile hard disk memory capacity of the player if you use this option.

a. **To Play From Memory Card:**

- Turn Off the player. Now insert your Micro SD memory card into the

memory card slot on side of player.

- Turn On the player and now the Micro SD memory card, T-Flash, is ready to use.
- When Micro SD Card has been inserted, then two items “**Local Folder**” and “**Card Folder**” will be existed for choose.
- Go into the card folder and choose you desired folder(s) and file(s) to play.
- To take out the Micro SD memory card, please turn Off the player before you do.

R. Reset Device

In some circumstances, the device may encounter dead halt during use. This device has design with built-in a mini tact switch which located at the behind of the earphone jack, so it can provide reset function to restart the device by pass through the earphone jack hole.

To Reset:

- Use a 2mm stick or similar object (like tooth stick), and carefully insert the stick, use dull side, into the earphone jack hole until you feel to hit the end. Actually that is the tact switch button surface.
- Then add a bit of force and you will get a click sound and feeling return from switch. The device is reset and restart in seconds.

Important: Do not reset the device if it is proper working.

S. Trouble Shooting

Unit cannot turn ON	* Check battery is it charged with enough energy.
No sound is heard from headphone.	*Check whether Volume is set “0” and connect the headphone plugs firmly. *Check whether the headphone plug is dirty. *Corrupted MP3 may make a static noise and the sound may cut off. Make sure that the music files are not corrupted.
Characters in LCD are corrupted	*Check whether the right language has been selected.
Download of media files fails.	*Check whether USB cable is damaged and is connected properly. *Check whether driver is installed correctly. *Check whether the player’s memory is in full.
Bluetooth can’t pair and connect to a Bluetooth receiver device	*Make sure Bluetooth receiver supports A2DP. *Make sure Bluetooth receiver is placed within connection distance in 5 – 10 meters. *Make sure Bluetooth receiver has already entered into pairing mode.

T. Frequently Asked Question

Where can I find updates and download?	Check for latest Software update at http://www.lenco.com/support/firmware/
--	---

U. Specification

Dimension	95mm (H) x 44.5mm (W) x 9.0mm (D)	
Weight	30g	
LCD	2.0 inches, Resolution (RGB) 176 x 220	
PC connection	USB 2.0	
Earphone Impedance	32 Ohm	
Internal Memory	See carton or giftbox	
Memory Card Slot	Micro SD Card (support up to 16GB)	
Battery	Lithium 3.7V, 170mAh	
	Max. Play Time: <ul style="list-style-type: none"> ● 8 ~ 10 hours for music at power saving mode ● 2 ~ 3 Hours for movie ● 2 ~ 4 Hours for Bluetooth Transmission at power saving mode 	
Bluetooth	Specification	V2.1 + EDR
	Frequency	2.402 ~ 2.480GHz
	RF Transmit Power	Class II: Up to +4dBm
	Transmission	MP3, WMA, WAV format Audio only
	Connection Distance	In 10 meters (open area)
Audio	Earphone Output	2mW x 2 at 32 Ohm
	Frequency Responses	100Hz to 20000Hz
	SNR	> 70dB
Music Format	MP3, WMA	32Kbps – 320kbps
	APE, FLAC, WAV, ACELP	
Movie Format	AVI	320x240 (max.)/ 208x176
Recorder Coding	MP3, WAV	
Picture Format	JPEG / BMP / GIF	
eBook Format	TXT	
Operating Temperature	0 to 40°C	
Operating System	Window 2000/XP/Vista/Win7, Mac 9.2 or Higher	

V. Disclaimer

Updates to Firmware and/or hardware components are made regularly. Therefore some of the instruction, specifications and pictures in this documentation may differ slightly from your particular situation. All items described in this guide for illustration purposes only and may not apply to particular situation. No legal right or entitlements may be obtained from the description made in this manual

W. Service and support

For information: www.lenco.com

For support: <http://lencosupport.zendesk.com>

Lenco helpdesk:

Germany 0900-1520530 (Local charges)

The Netherlands 0900-23553626 (Local charges + 1ct p/min)

Belgium 02-6200115 (Local charges)

France 03-81484280 (Local charges)

The helpdesk is accessible from Monday till Friday from 9 AM till 6 PM. When contacting Lenco, you will always be asked for the model and serial number of your product. The serial number can be found on the back of the device. Please write down the serial number below:

Model: XEMIO-760 BT

Serial number: _____

Lenco offers service and warranty in accordance to European law, which means that in case of repairs (both during and after the warranty period) you should contact your local dealer.

Important note: It is not possible to send products that need repairs to Lenco directly.

Important note: If this unit is opened or accessed by a non-official service center in any way, the warranty expires.

This device is not suitable for professional use. In case of professional use, all warranty obligations of the manufacturer will be voided.

X. WEEE Directive



This symbol indicates that the relevant electrical product or battery should not be disposed of as general household waste in Europe. To ensure the correct waste treatment of the product and battery, please dispose them in accordance to any applicable local laws of requirement for disposal of electrical equipment or batteries. In so doing, you will help to conserve natural resources and improve standards of environmental protection in treatment and disposal of electrical waste (Waste Electrical and Electronic Equipment Directive).

Y. CE marking



Products with the CE marking comply with the EMC Directive (2004/108/EC) and the Low Voltage Directive (2006/95/EC) issued by the Commission of the European Community.

Hereby, STL Group BV, Ankerkade 20 NL 5928 PL Venlo, declares that this product is in compliance with the essential requirements and other relevant provisions of Directive 1999/5/EC.

The declaration of conformity may be consulted at

<https://lencosupport.zendesk.com/forums/22413161-CE-Documents>

This product operates at 2400 - 2483.5 MHz and is designated only to be used inside a normal household environment. This product is suited for this purpose within all EU counties.

®All rights reserved